



Softball Contact: James Ybiernas • Phone: (310) 206-8123 • FAX: (310) 825-8664 • E-mail: jamesy@athletics.ucla.edu • www.uclabruins.com

## 2008 UCLA Softball Schedule & Results Rankings: USA Softball (3), NFCA (T-3)

Overall: 43-6 Pac-10: 15-3

2/8	Nevada <sup>2</sup>	W, 10-1 (5)
2/8	#5 Oklahoma <sup>2, A</sup>	W, 6-1
2/9	Santa Clara <sup>2</sup>	W, 27-1 (5)
2/9	UC Santa Barbara <sup>2, A</sup>	W, 7-5 (8)
2/10	#5 Oklahoma <sup>2, A</sup>	L, 0-7
2/15	vs. #22 Missouri <sup>3</sup>	W, 4-0
2/15	vs. South Carolina <sup>3</sup>	W, 6-2
2/16	vs. Illinois <sup>3</sup>	L, 2-6
2/16	vs. Portland State <sup>3</sup>	W, 7-4
2/17	vs. Wisconsin <sup>3</sup>	W, 4-1
2/20	@ Loyola Marymount	Canceled - Rain
2/22	vs. Massachusetts <sup>4</sup>	W, 4-2
2/22	vs. #18 Georgia <sup>4</sup>	W, 5-2
2/23	vs. #10 Baylor <sup>4</sup>	W, 6-1
2/23	vs. #14 Hawai'i <sup>4</sup>	W, 3-0
2/24	vs. #2 Northwestern <sup>4</sup>	W, 6-2
2/27	Cal State Bakersfield	W, 3-0
2/29	vs. James Madison <sup>5</sup>	W, 8-0 (5)
2/29	@ San Diego <sup>5</sup>	W, 10-0 (6)
3/1	vs. Eastern Michigan <sup>5</sup>	W, 8-0 (6)
3/1	@ #20 San Diego State <sup>5</sup>	W, 2-1 (9)
3/2	vs. Saint Peter's <sup>5</sup>	W, 10-0 (5)
3/5	UNLV	W, 1-0
3/7	vs. #24 Virginia Tech <sup>6</sup>	W, 1-0
3/7	vs. Notre Dame <sup>6</sup>	W, 3-2
3/8	vs. Rutgers <sup>6</sup>	W, 9-0
3/9	vs. #8 Northwestern <sup>6</sup>	W, 2-0
3/9	vs. Long Beach State <sup>6</sup>	W, 1-0 (8)
3/12	Cal State Fullerton <sup>A</sup>	L, 0-1 (8)
3/13	Cal State Northridge	W, 7-0
3/25	@ UC Santa Barbara	W, 7-2
3/25	@ UC Santa Barbara	W, 8-1
3/28	Oregon State <sup>1, A</sup>	W, 3-0
3/29	Oregon <sup>1, A</sup>	W, 2-0
3/30	Oregon <sup>1, A</sup>	W, 12-0 (5)
4/2	#24 Washington <sup>1, A</sup>	W, 7-6 (8)
4/4	#7 Stanford <sup>1, A</sup>	W, 3-1
4/5	#21 California <sup>1, A</sup>	W, 2-1
4/6	#21 California <sup>1, A</sup>	W, 5-0
4/11	@ #1 Arizona State <sup>1</sup>	L, 0-3
4/12	@ #7 Arizona <sup>1, B</sup>	L, 0-8 (6)
4/13	@ #7 Arizona <sup>1</sup>	W, 2-1
4/18	@ #20 Washington <sup>1</sup>	W, 2-1
4/19	@ #20 Washington <sup>1</sup>	W, 4-0
4/22	USA National Team <sup>7</sup>	L, 2-8
4/25	@ #21 California <sup>1</sup>	W, 7-2
4/26	@ #7 Stanford <sup>1</sup>	W, 1-0
4/27	@ #7 Stanford <sup>1</sup>	W, 4-1
5/2	#10 Arizona <sup>1, A</sup>	W, 2-1
5/3	#1 Arizona State <sup>1, A</sup>	W, 5-0
5/4	#1 Arizona State <sup>1, A</sup>	L, 2-5
5/8	@ Oregon <sup>1</sup>	4 p.m.
5/9	@ Oregon State <sup>1</sup>	3 p.m.
5/10	@ Oregon State <sup>1</sup>	12 p.m.
5/16-18	NCAA Regionals	
5/23-25	NCAA Super Regionals	
5/29-6/4	NCAA Women's College World Series	

All Times Pacific and subject to change

# - NFCA/USA Softball National Ranking at Time of Game

1 - Pacific-10 Conference Games

2 - Stacy Winsberg Memorial Tournament (Easton Stadium)

3 - Louisville Slugger Desert Classic (Las Vegas/Henderson, Nev.)

4 - Palm Springs Classic (Cathedral City, Calif.)

5 - San Diego Classic I (San Diego, Calif.)

6 - Long Beach State Invitational (Lakewood, Calif.)

7 - Exhibition

A - Games Broadcast on www.UCLABruins.com

B - Game Broadcast Live on Fox Sports Net

## GAMES 50-52 • PAC-10 CONFERENCE PLAY • VS. OREGON AND OREGON STATE

Thursday, May 8

#3 UCLA at Oregon

4 p.m. • Howe Field • Eugene, Ore.

Friday, May 9

#3 UCLA at Oregon State

3 p.m. • OSU Softball Complex • Corvallis, Ore.

Saturday, May 10

#3 UCLA at Oregon State

12 p.m. • OSU Softball Complex • Corvallis, Ore.



## REGULAR SEASON WRAPS UP IN OREGON

The third-ranked Bruins (43-6, 15-3 Pac-10) conclude regular-season play in Oregon this weekend with three games. UCLA faces Oregon (32-24, 4-13) in Eugene on Thursday before traveling to Corvallis to take on Oregon State (26-29, 4-14) on Friday (3 p.m.) and Saturday (12 p.m.). All three games will feature Gametracker on UCLABruins.com.

## NCAA SELECTION SHOW ON SUNDAY

The field of 64 teams for the 2008 NCAA Division I Softball Championship will be announced live at approximately 7 p.m. on Sunday on ESPNU, following the NCAA Division I men's lacrosse game. After the official selection show, ESPNEWS will televise a brief bracket announcement between 7:30 and 8.

## BRUINS IN THE POLLS

The Bruins moved up one spot to third in both the ESPN.com/USA Softball and USA Today/NFCA rankings this week. UCLA is tied for third in the NFCA poll and solo third in the USA Softball rankings. Full polls can be seen on page two of this release.

## BRUINS ON THE WEB

All UCLA softball regional and super regional games will be broadcast live over the internet at UCLABruins.com with Darren Preston at the call. In addition, every contest will feature Gametracker on the UCLA website.

## KAMEKONA EARNS AWARDS TRIFECTA

For the second time this season, a UCLA softball player has been named NFCA, USA Softball and Pac-10 Player of the Week. This time it was junior Amanda Kamekona, who went 6-for-10 (.600) with three home runs and five runs batted in last weekend in wins over #10 Arizona and top-ranked Arizona State.

Kamekona joins senior Anjelica Selden, who was named National POW by the NFCA and USA Softball, as well as Pac-10 Pitcher of the Week on Feb. 26.

Kamekona had hits in all three games to extend her hitting streak to eight, tying for the longest hitting

streak on the team this year with sophomore Megan Langenfeld.

After going 1-for-3 against Arizona on Friday, Kamekona went 2-for-3 with four RBI and two home runs against top-ranked Arizona State on Saturday. With the Bruins up 1-0, the junior hit a one-out home run in the third to give UCLA a two-run advantage. Kamekona added another homer in the fifth, this time a three-run shot to make it a 5-0 game. Both home runs came off ASU star pitcher Katie Burkhart.

Kamekona continued her home run binge on Sunday with a solo shot to lead off the bottom of the fifth. It was one of three hits for Kamekona, who added singles in the first and seventh for her fourth three-hit game of the season.

Kamekona leads the Bruins with 11 home runs and 39 runs scored and raised her season average to .327. She is second on the team with 36 runs batted in and 14 doubles.

The conference award marks the ninth time this season that the Bruins have been recognized with Pac-10 Player or Pitcher of the Week honors, a league-best total. Freshman GiOnna DiSalvatore is a two-time Player of the Week (Feb. 12 and Feb. 26), while freshman Samantha Camuso earned the honor on April 8. Three different pitchers have earned POW accolades. Selden has won the honor three times (Feb. 26, March 11 and April 1), while Langenfeld (April 29) and freshman Donna Kerr (March 4) have also picked up the award.

Kamekona's NFCA POW award marks the 19th in UCLA history, while the USA Softball honor is the 10th for the Bruins. Kamekona shared this week's USA Softball award with Massachusetts' Brandice Balschmiter.

## BRUINS IN THE NCAA RANKINGS

Senior Anjelica Selden is in the national Top 10 in four statistical categories, including seventh in earned run average at 0.78. She is 10th in three other categories: strikeouts per seven (10.2), fewest walks per seven innings (0.98) and fewest hits allowed per seven (3.61). Freshman Donna Kerr is right behind Selden in ERA, placing ninth at 0.86. She is also seventh in fewest hits

**ESPN/USA Softball Top 25 Poll (May 6)**

No.	School (1st-Place Votes)	Record	Points	Last
1.	Florida (14)	59-2	493	2
2.	Arizona State (6)	54-4	484	1
3.	<b>UCLA</b>	<b>43-6</b>	<b>456</b>	<b>4</b>
4.	Alabama	49-5	432	2
5.	Michigan	48-5	423	5
6.	Texas A&M	46-7	410	6
7.	Oklahoma	43-11	370	7
8.	Stanford	45-10	362	8
9.	Arizona	33-16	319	10
10.	Fresno State	49-9	318	9
11.	Houston	48-8	285	13
12.	<b>Northwestern</b>	<b>34-13</b>	<b>276</b>	<b>11</b>
13.	North Carolina	49-9-1	242	14
14.	Tennessee	46-13	237	12
15.	LSU	41-15	221	16
16.	Long Beach State	37-14	183	15
17.	Virginia Tech	41-15	169	18
18.	Louisiana-Lafayette	42-12	160	17
19.	San Diego State	41-15	137	19
20.	Nevada	40-14	114	22
21.	Massachusetts	36-11	113	20
22.	Hawai'i	36-17	69	23
23.	DePaul	45-16	52	RV
24.	Washington	26-21-1	44	21
25.	California	40-21	33	25

Others Receiving Votes: **Missouri 24**, Creighton 23, Mississippi State 21, **Georgia 12**, Hofstra 11, South Florida 4, BYU 2, **Oregon 1**.

**USA Today/NFCA Top 25 Poll (May 6)**

No.	School (1st-Place Votes)	Record	Points	Last
1.	Florida (25)	59-2	741	3
2.	Arizona State (3)	54-4	704	2
3.	<b>UCLA</b>	<b>43-6</b>	<b>680</b>	<b>4</b>
4.	Alabama (2)	49-5	680	1
5.	Texas A&M	46-7	630	5
6.	Michigan	48-5	614	6
7.	Oklahoma	43-11	569	7
8.	Stanford	45-10	530	8
9.	Houston	48-8	479	9
10.	Fresno State	49-9	466	10
11.	Arizona	33-16	437	12
12.	<b>Northwestern</b>	<b>34-13</b>	<b>414</b>	<b>11</b>
13.	North Carolina	49-9-1	404	14
14.	Tennessee	46-13	359	13
15.	LSU	41-15	315	15
16.	Louisiana-Lafayette	42-12	286	16
17.	Nevada	40-14	250	19
18.	Virginia Tech	41-15	224	18
19.	Long Beach State	37-14	222	17
20.	DePaul	45-16	199	20
21.	San Diego State	41-15	159	21
22.	Massachusetts	36-11	90	25
23.	California	40-21	87	22
24.	Washington	26-21-1	39	23
25.	Georgia	43-12	36	NR

Others Receiving Votes: Mississippi State 31, Hawai'i 31, Creighton 28, **Missouri 15**, Auburn 10, BYU 7, Hofstra 7, Central Florida 5, Kent State 2.

**Bold indicates 2008 UCLA opponents**

**UCLA in USASB Poll      UCLA in NFCA Poll**

	Preseason	
10	Feb. 12	14
6	Feb. 19	10
5	Feb. 26	11
4	March 4	7
2	March 11	6
2	March 18	3
2	March 25	4
1	April 1	4
1	April 8	4
4	April 15	5
4	April 22	4
4	April 29	4
3	May 6	T-3

allowed at 3.51 and 29th in strikeouts per seven at 8.7. Completing the UCLA pitcher trifecta is sophomore Megan Langenfeld, who is tied for 10th with five saves.

**A WELL-ROUNDED TEAM**

Only a select number of teams can claim to be among the nation's best in hitting, pitching and fielding. UCLA is one of those elite teams, ranking in the national Top 20 in batting average, earned run average and fielding percentage. The Bruins are 15th in hitting at .316, second with a 0.95 ERA and 13th with a .975 fielding percentage. The only other team that is in the Top 20 in all three categories this week is 16th-ranked Louisiana-Lafayette. The Bruins as a team also rank fifth in the nation in winning percentage (.878), 18th in doubles per game (1.57), 37th in slugging percentage (.449) and 47th in scoring (4.90 runs per game).

**BRUINS IN THE PAC-10 RANKINGS**

UCLA maintained its top spot among Pac-10 teams in earned run average (0.95) and fielding percentage (.975) and remains second in batting average at .316. On offense, the Bruins rank in the top half of the conference in slugging percentage (3rd, .449), on base percentage (3rd, .391), hits (T-3rd, 409), triples (T-3rd, 6), sacrifice flies (T-3rd, 9) and doubles (4th, 77). In the circle, UCLA is first in opposing batting average (.150) and second in strikeouts (443). On an individual level, senior Anjelica Selden is back atop the conference in ERA at 0.78, also placing third in opposing batting average (.149), fourth in wins (22) and fifth in strikeouts (249). During Pac-10 games, Selden leads the league with a 0.70 ERA and a .167 opposing batting average. Freshman Donna Kerr is second overall in ERA (0.86) and opposing batting average (.147), while sophomore Megan Langenfeld is first in saves (5), fifth in opposing batting average (.157) and sixth in ERA (1.57). Offensively, the Bruins have three of the top seven hitters in the conference, with all three being freshmen. Samantha Camuso is third at .382, GiOnna DiSalvatore is fifth at .373 and Katie Schroeder is tied for seventh at .364. Full team and individual Pac-10 rankings can be found on page six of this release.

**SCORING = WINNING**

Sounds simple enough, right? Well it really holds true for the Bruins, who are 43-2 when scoring at least one run and have been shutout in four of their six losses. For only the second time this season, UCLA lost despite getting on the board in Sunday's 5-2 setback to Arizona State. The other loss for the Bruins came on Feb. 16 to Illinois (6-2). Scoring first of course has been the key, as UCLA is 39-0 when crossing home plate first and just 4-6 when the opponent scores the initial run. The Bruins are also 25-0 when scoring in their first at-bat. However, another streak came to an end on Sunday, as the Bruins dropped their first game of the year when hitting a home run. UCLA had a homer in all three contests last week and is now 17-1 when leaving the yard.

**BOMBS AWAY**

For the most part this season, the Bruins have manufactured their runs with plenty of singles, doubles, sacrifice hits and walks. But this weekend, UCLA brought out the big bats, belting five home runs in its three-game series with the Arizona schools. Facing the two top home run hitting teams in the Pac-10, it was the last place team in that category that out-homered Arizona State and Arizona by a 5-2 margin. Junior Amanda Kamekona hit three out, while freshmen GiOnna DiSalvatore and Monica Harrison also had

homers, with Harrison's coming as a walk-off bomb against Arizona on Friday. Adding in two home runs at Stanford on April 27, the Bruins have seven home runs in their last four games. To put last weekend's home run display in perspective, the Bruins had seven homers in their previous 27 games coming into the road contest at Stanford two Sundays ago.

**NO BOMBS AWAY**

The Bruin offense had a fantastic weekend leaving the yard, but the UCLA pitching staff has done a masterful job all season in terms of keeping the ball in the park. The Bruins are one of just two teams along with top-ranked Florida to allow fewer than 10 home runs this season. UCLA has given up nine, while Florida has allowed six dingers.

**WINNING THE NAIL BITERS**

Great teams win close games and the Bruins have been doing just that, posting a 16-1 record in contests decided by two runs or less. UCLA won another nail biter on Friday against Arizona with a 2-1 victory thanks to freshman Monica Harrison's walk-off home run in the bottom of the seventh. The win improved UCLA to 11-1 in one-run games. The Bruins are also a perfect 5-0 in two-run contests. The only loss for UCLA in a one-run game was on March 12 in a 1-0, eight-inning defeat against Cal State Fullerton.

**SCOUTING THE DUCKS**

Oregon is coming off a 1-2 weekend at home against the Bay Area schools, falling to Stanford and splitting with California. The Ducks are 32-24 overall and 4-13 in Pac-10 play, digging themselves an early hole in conference action with a 1-9 start. But Oregon is 3-4 in its last seven Pac-10 contests, including wins over ranked teams Arizona and Cal. For the season, the Ducks have two players batting over .300 in sophomore Neena Bryant (.341) and freshman Cortney Kivett (.314). Bryant leads the team with nine home runs and 42 runs batted in, while Kivett leads the squad with 33 stolen bases. As a team, Oregon has swiped 104 bases this year. The Ducks' bats have slowed during Pac-10 play, hitting just .167 with three home runs. Sophomore Blair Williamson is the top batter during conference action, hitting at a .296 clip. In the circle, junior Melissa Rice owns a team-low 2.17 ERA, an 11-10 record and 85 strikeouts in 125 2/3 innings. Also seeing action in the circle is senior Alicia Cook (2.21, 15-10, 168 IP, 140 K) and freshman Brittany Rumpfelt (2.72, 6-4, 74.2 IP, 28 K). All three pitchers have started at least four games in league action, with Cook posting all four Pac-10 wins to go with a team-best 3.34 ERA in conference.

**THE MATCHUP: BRUINS VS. DUCKS**

The Bruins blanked the Ducks in both contests earlier this season at Easton Stadium, winning 2-0 on March 29 and 12-0 in five innings the following day. UCLA was held to two hits in game one, but made the most of them by scoring twice. Freshman Donna Kerr and sophomore Megan Langenfeld combined on a four-hitter in the circle, collectively striking out 10. The following afternoon, the Bruins scored five in both the first and second and two more in the third en route to the run-rule victory. Sophomore Julie Burney and freshman Monica Harrison each drove in three, while Burney, senior Krista Colburn and freshman Katie Schroeder all had two-hit performances. Senior Anjelica Selden and Langenfeld combined to strike out nine in a six-hitter. UCLA leads the all-time series with Oregon 63-12, having claimed eight in a row as it looks for its



third straight season sweep of the Ducks. The Bruins have won three in a row in Eugene, where they hold a 30-5 advantage. Oregon's last victories in the series came in 2005 when it swept UCLA.

### SCOUTING THE BEAVERS

Oregon State will need to win all four games this week to have a chance at making the postseason, as it brings a record of 26-29 (4-14 in Pac-10) into Tuesday's game against Portland State. The Beavers have dropped seven in a row. Oregon State is batting .266 on the season and is led by sophomore Dani Chisholm, who holds a team-best .328 average and 15 stolen bases. Freshman McKenna Lowe is also hitting above .300 at .303 with 11 steals. Senior Cambria Miranda leads the team with nine home runs. The Beavers are batting .207 during Pac-10 play, led by freshman Erin Guzy's .313 average. Oregon State has nine homers and 19 steals in league action. In the circle, sophomore Kelly Dyer has started 16 of the 18 Pac-10 games and has earned the win or loss in each of the Beavers' last 13 contests. She holds a 17-23 overall record with a 2.74 ERA and in Pac-10 play she is 4-13 with a 3.00 ERA.

### THE MATCHUP: BRUINS VS. BEAVERS

UCLA shutout Oregon State in its first meeting of the year, a 3-0 victory at Easton Stadium on March 28. Sophomore Megan Langenfeld had two RBI and senior Krista Colburn and freshman GiOnna DiSalvatore each posted two hits. Senior Anjelica Selden and Langenfeld combined on a two-hitter in the circle, as Selden fanned eight. The win improved the Bruins to 74-9 all-time against the Beavers. UCLA is 31-5 in Corvallis, but lost last year's meeting 7-0. The Bruins are still 6-2 in their last eight at the OSU Softball Complex.

### JELLY ON A ROLL

Senior Anjelica Selden earned two wins in the circle

during her final Pac-10 series at Easton Stadium last weekend, besting #10 Arizona and top-ranked Arizona State. Selden tossed a two-hitter against the Wildcats on Friday and followed that up with a five-hit shutout of the Sun Devils on Saturday to become just the second pitcher to blank ASU this season. Including a relief appearance on Sunday in which she threw 3 1/3 shutout frames against Arizona State, Selden allowed just one run in 17 1/3 innings (0.40 ERA) with 17 strikeouts. On the season, Selden leads the team and the Pac-10 with a 0.78 earned run average. The senior is also tops on the squad with a 22-3 record, 20 complete games, six shutouts and 249 strikeouts in 170 2/3 innings. In the national rankings, Selden is seventh in ERA. She is also 10th in three more categories: strikeouts per seven innings (10.2), fewest walks per seven (0.98) and fewest hits allowed per seven (3.61). It has been a milestone campaign for the two-time All-American, who has moved into second at UCLA in wins and appearances this season after coming into the year second in complete games and innings pitched. Selden became the 15th Division I pitcher to reach 1,300 strikeouts on April 6 against California and 12 days later she earned her 100th career victory to become the 34th D-I hurler to accomplish that feat. Entering this weekend, the senior has 1,355 strikeouts and 103 wins. UCLA's all-time strikeout leader set a new personal best for a seven-inning game with 17 against Northwestern on Feb. 24 and also set a career high for punch outs in a five-inning game in her very next contest with 14 against James Madison on Feb. 29. Selden has 10 double-figure strikeout games this season and 64 for her career. She has been named Pac-10 Pitcher of the Week on three occasions (Feb. 26, March 11 and April 1), giving her 10 POW awards for her career. She stands one behind Keira Goerl's 11 POW accolades, the most for any Bruin pitcher. One of the most decorated pitchers in UCLA history has

### 2008 UCLA Softball Roster

NO	NAME	POS	HT	B/T	YR	EXP	HOMETOWN (HIGH SCHOOL/LAST SCHOOL)
3	GiOnna DiSalvatore	INF	5-9	L/R	FR	HS	Palm Harbor, FL (Countryside HS)
4	Anjelica Selden	P	5-9½	R/R	SR	3V	Vacaville, CA (Vanden HS)
5	Donna Kerr	P	5-7	R/R	FR	HS	San Diego, CA (Patrick Henry HS)
7	Samantha Camuso	OF	5-7	L/R	FR	HS	Redding, CA (Foothill HS)
9	Kaila Shull	C/OF	5-8	L/R	SO	1V	Lodi, CA (Jim Elliot Christian HS)
10	Lauren Mirabal	UTIL	5-6	L/R	FR	HS	San Dimas, CA (Bishop Amat HS)
11	Ashley Herrera	INF	5-6	L/R	SR	3V	Canon Country, CA (Valencia HS)
13	Krista Colburn	OF	5-10	R/R	SR	3V	Mukilteo, WA (Kamiak HS)
14	Julie Burney	INF	5-5	R/R	SO	1V	Placentia, CA (El Dorado HS)
18	Monica Harrison	INF	5-4	R/R	FR	HS	Garden Grove, CA (Pacifica HS)
20	Whitney Baker	P	5-10	R/R	SO	1V	Vancouver, WA (Skyview HS)
21	Grace Murray	OF	5-4	R/R	FR	HS	Lakewood, CA (Gahr HS)
23	Amy Crawford	OF	5-9	R/R	FR	HS	Pleasanton, CA (Foothill HS)
27	Jennifer Schroeder	C	6-0	R/R	JR	2V	Yorba Linda, CA (Esperanza HS)
29	Katie Schroeder	OF	5-10	L/R	FR	HS	Yorba Linda, CA (Esperanza HS)
31	Megan Langenfeld	P/1B	5-6	L/R	SO	1V	Bakersfield, CA (Centennial HS)
44	Danielle Peterson	UTIL	5-7	R/R	SR	3V	San Jose, CA (Archbishop Mitty HS)
47	Amanda Kamekona	INF	5-2	R/R	JR	TR	Chino Hills, CA (Ayala HS/Cal State Fullerton)

**Head Coach:** Kelly Inouye-Perez, 2nd Year as Head Coach, 15th Year at UCLA (UCLA, 1993)

**Assistant Coach:** Lisa Fernandez, 10th Year (UCLA, 1995)

**Assistant Coach:** Gina Vecchione, 9th Year (UCLA, 1984)

**Volunteer Assistant Coach:** Natasha Watley, 4th Year (UCLA, 2005)

#### Pronunciation Guide

Samantha Camuso	CA-moo-so
GiOnna DiSalvatore	G-onna D-sal-va-tor
Amanda Kamekona	KAHM-e-ko-na
Donna Kerr	rhymes with fur
Lauren Mirabal	MEER-a-ball
Jennifer/Katie Schroeder	SCHRO-der
Kelly Inouye-Perez	ee-NO-way
Gina Vecchione	VEETCH-e-o-nee

#### In-Season Player Birthdays - Age Turning in ( )

GiOnna DiSalvatore	Mar. 11 (19)
Monica Harrison	Mar. 15 (19)
Ashley Herrera	Mar. 18 (23)
Amanda Kamekona	Apr. 5 (22)
Donna Kerr	Apr. 16 (19)
Anjelica Selden	Apr. 26 (22)
Katie Schroeder	Apr. 29 (19)
Julie Burney	May 24 (20)

### 2008 UCLA Softball Quick Facts

<b>Location</b>	J.D. Morgan Center 325 Westwood Plaza, Los Angeles, CA 90095
<b>Founded</b>	1919
<b>Enrollment</b>	36,890
<b>Nickname</b>	Bruins
<b>Colors</b>	Blue and Gold
<b>Conference</b>	Pacific-10
<b>Chancellor</b>	Dr. Gene Block
<b>Athletic Director</b>	Dan Guerrero
<b>Senior Associate A.D./SWA</b>	Petrina Long
<b>Faculty Athletic Representative</b>	Donald Morrison
<b>Home Field (Capacity)</b>	Easton Stadium (1,328)
<b>Easton Stadium Press Box</b>	(310) 206-0112
<b>Head Coach</b>	Kelly Inouye-Perez (UCLA, '93), 2nd Yr
<b>Career Record</b>	80-24 (.769)
<b>Assistant Coach</b>	Lisa Fernandez, 10th Year
<b>Assistant Coach</b>	Gina Vecchione, 9th Year
<b>Volunteer Coach</b>	Natasha Watley, 4th Year
<b>Softball Office Phone</b>	(310) 206-6779
<b>2007 Record</b>	37-18
<b>2007 Pacific-10 Record</b>	12-9 (T-3rd)
<b>2007 Postseason</b>	1-2 (NCAA Regionals)
<b>2007 Final NFCA/USA Softball Rankings</b>	18/18
<b>Letterwinners Returning/Lost</b>	9/10
<b>Starters Returning/Lost</b>	4/5
<b>Pitchers Returning/Lost</b>	3/1
<b>Newcomers</b>	9 (8 freshmen, 1 junior transfer)
<b>National Championships</b>	11 (AIAW - '78) (NCAA - '82, '84, '85, '88, '89, '90, '92, '99, '03, '04)
<b>All-Time NCAA Postseason Record</b>	154-36 (.811)
<b>Pacific-10 Conference Championships</b>	8 ( '88, '89, '90, '91, '93, '99, '02, '06)
<b>Sports Information Director</b>	Marc Dellins
<b>Assistant SID (Softball)</b>	James Ybiernas
<b>Ybiernas' Office Phone</b>	(310) 206-8123
<b>Ybiernas' Cell Phone</b>	(818) 635-8873
<b>Ybiernas' E-mail</b>	jamesy@athletics.ucla.edu
<b>Sports Information Fax</b>	(310) 825-8664
<b>Website</b>	www.uclabruins.com

### Media Guidelines and Policies

**Credentials:** Media and photography credentials for UCLA home games may be obtained by working press only by contacting Assistant Sports Information Director James Ybiernas at the phone numbers or e-mail address above. All requests should be submitted at least 24 hours in advance. Credentials can be picked up at the entrance to Easton Stadium.

**Interviews:** All interviews must be arranged through the UCLA Sports Information Office. Student-athletes have been instructed not to grant any interviews, in person or by telephone, not arranged by the Sports Information Office. Telephone numbers are private and will not be released. Please do not expect student-athletes to be available if you have not made prior arrangements. Players and coaches are available before or after practice depending on availability. Practice is generally from 11:15 a.m. to 2 p.m. (Monday, Wednesday, Friday) or 1-4 p.m. (Tuesday, Thursday) at Easton Stadium. Interviews during different times will require advance planning. If you would like to reach a member of the UCLA softball team on the road, contact James Ybiernas.

**UCLA Softball's Record ...**

At Easton Stadium .....	16-3
On the Road .....	10-2
At Neutral Sites .....	17-1
As the Designated Home Team in Tournaments .....	13-1
As the Designated Away Team in Tournaments .....	10-1
Against Left-Handed Starters .....	3-2
Against Right-Handed Starters .....	40-4
On Tuesdays .....	2-0
On Wednesdays .....	3-1
On Thursdays .....	1-0
On Fridays .....	15-1
On Saturdays .....	13-2
On Sundays .....	9-2
In February .....	16-2
In March .....	15-1
In April .....	10-2
In May/June .....	2-1
In 1-Run Games .....	11-1
In 2-Run Games .....	5-0
In 5+Run Games .....	16-2
In Day Games (starting before 5 p.m.) .....	40-4
In Night Games (starting after 5 p.m.) .....	3-2
In Extra Innings .....	4-1
In Mercy-Rule Games .....	7-1
In Shutouts .....	20-4
Against Ranked Teams .....	21-4
When Scoring First .....	39-0
When Opponent Scores First .....	4-6
When They Score in First Inning .....	25-0
When Opponent Scores in First Inning .....	4-3
When Leading After the 3rd .....	32-0
When Trailing After the 3rd .....	3-4
When Tied After the 3rd .....	8-2
When Leading After the 6th .....	30-0
When Trailing After the 6th .....	1-4
When Tied After the 6th .....	5-1
When Outhitting the Opponent .....	38-2
When Opponent Has More Hits .....	1-4
When Hits are the Same .....	4-0
When They Don't Make an Error .....	20-3
When Making at Least One Error .....	23-3
When Hitting a Home Run .....	17-1
When They Don't Hit a Home Run.....	26-5

**Hitting Streaks**

Player	'08 Longest	Current Streak	Career Long
Kamekona	8	8	8 (2008)
Langenfeld	8	1	11 (2007)
DiSalvatore	7	-	7 (2008)
K.Schroeder	7	5	7 (2008)
Colburn	6	-	12 (2006)
Camuso	5	1	5 (2008)
J.Schroeder	5	2	5 (2008)
Shull	4	-	11 (2007)
Harrison	4	1	4 (2008)
Herrera	4	-	5 (2006)
Burney	3	-	4 (2007)

**Multiple-Hit Games**

Player	2	3	4	5+	'08 Tot	Career
DiSalvatore	12	5	-	-	17	17
K.Schroeder	10	4	2	-	16	16
Camuso	11	3	1	-	15	15
Colburn	12	2	-	-	14	57
Kamekona	9	4	-	-	13	35
Langenfeld	6	3	-	-	9	23
Harrison	4	2	-	-	6	6
Herrera	3	2	1	-	6	20
Burney	3	-	-	-	3	9
Shull	2	-	-	-	2	8
J.Schroeder	1	-	-	-	1	1

**Multiple-RBI Games**

Player	2	3	4	5+	'08 Tot	Career
Langenfeld	6	4	-	-	10	22
Kamekona	5	2	1	1	9	18
DiSalvatore	2	3	3	-	8	8
Camuso	5	1	-	1	7	7
Colburn	5	1	-	-	6	31
Shull	3	-	-	-	3	9
Harrison	2	1	-	-	3	3
Burney	1	1	-	-	2	5
K.Schroeder	1	-	1	-	2	2
J.Schroeder	2	-	-	-	2	2
Herrera	-	-	-	-	0	6

also been bestowed with National Player of the Week awards from the NFCA and USA Softball (Feb. 26). In addition, Selden is a finalist for the USA Softball Player of the Year and Lowe's Senior CLASS awards.

**Selden on UCLA's Career Leaders List**

Category	Place (Total)	Next on the List
<b>Strikeouts</b>	1st (1,355)	--
<b>Appearances</b>	2nd (156)	161 (Keira Goerl)
<b>Innings Pitched</b>	2nd (949.1)	1017.2 (Keira Goerl)
<b>Wins</b>	2nd (103)	130 (Keira Goerl)
<b>Complete Games</b>	2nd (119)	135 (Keira Goerl)

**AK-47**

The smallest player on the Bruin roster came up with the biggest weekend last week, as junior Amanda Kamekona went 6-for-10 (.600) with three home runs and five RBI en route to earning NFCA and USA Softball National Player of the Week and Pac-10 Conference Player of the Week honors. Kamekona had hits in all three games last weekend to extend her hitting streak to eight. On Saturday, the junior went deep twice off of All-American Katie Burkhart, including a three-run shot in the fifth that cemented a 5-0 victory against Arizona State. Kamekona went deep again on Sunday against the Sun Devils to give her a team-best 11 home runs on the year. During her eight-game hitting streak, Kamekona is batting .429 with a .929 slugging percentage, four home runs, seven RBI, six runs scored and two doubles. She has three multiple-hit games during the streak to give her 13 on the season and posted her fourth three-hit contest of the year on Sunday. Having hit six of UCLA's last 11 home runs, Kamekona has moved into a tie for ninth in the Pac-10 in dingers. Along with leading the team in homers, Kamekona, who is batting .327, is first in runs scored (39), slugging (.654) and sacrifice hits (10), tied for first in stolen bases (8) and second in doubles (14), runs batted in (36) and game-winning RBI (7). Of Kamekona's 36 RBI, eight came in a Feb. 9 contest against Santa Clara, which set a UCLA single-game record. Breaking the old mark of Julie Marshall, who had seven RBI in a game against Oregon on April 17, 1999, Kamekona had a two-run homer, a two-run double, a three-run double and a sacrifice fly against the Broncos.

**HERE WE GO, KATIE SCHRO!**

One of the hottest Bruin bats of late has been the one carried by freshman Katie Schroeder, who has hits in 12 of her last 13 games. She is batting .390 over the last baker's dozen contests with five runs scored and two runs batted in. Schroeder has three multiple-hit games during the stretch to give her 16 on the season, which is second on the squad. Last weekend, Schroeder went 2-for-3 on Friday against 10th-ranked Arizona and followed that up with a hit in both of the contests against Arizona State. On Saturday, Schroeder had a single and scored a run and on Sunday, the freshman had a two-out, run-scoring double in the fourth to get the Bruins on the board. The freshman had a seven-game hitting streak from April 5-19 and enters this week's play with at least one hit in five in a row. Schroeder is third on the team with a .364 batting average and tied for seventh among Pac-10 players. She is also fourth with 26 runs scored and third with 17 walks and seven stolen bases. Twice this season, Schroeder has posted four-hit games, going 4-for-5 with four RBI and three runs scored against Santa Clara on Feb. 9 and 4-for-5 against Rutgers on March 8.

On March 25 in a doubleheader at UC Santa Barbara, Schroeder posted back-to-back three-hit performances, completing the twin bill 6-for-9 with three runs scored. She also has three-hit efforts against Long Beach State (March 9) and California (April 6).

**KC AT THE BAT**

Senior Krista Colburn will make her final Pac-10 road trip this weekend and comes into it fourth on the team with a .341 batting average and first with 30 walks. The senior has collected hits in seven of her last nine games, with one of those base knocks being her first home run of the season. On April 27 in her last at-bat in Palo Alto, Colburn hit her 18th career homer in the Bruins' 4-1 victory over Stanford. It was the first home run for Colburn since May 11, 2007 at Arizona State. Colburn finished the weekend with two runs scored and three runs batted in, driving in a pair in a win at California on April 25. Two weeks ago in Seattle, the Washington native had a fantastic series, going 5-for-8 in two Bruin victories. Colburn had her second three-hit game of the season on April 18 and came back with another multiple-hit effort one day later against the Huskies, going 2-for-4 while scoring twice and driving in a run. Colburn ranks seventh among conference players with her 30 walks and is ninth in the Pac-10 and second on the club with a .453 on base percentage. The All-American became the 20th member of UCLA's 200-hit club when she doubled in the fifth inning of the March 28th Pac-10 opener against Oregon State. She has five multiple-hit games during Pac-10 play to give her 14 this season and 57 for her career. The 14 multiple-hit contests places her fourth on the team. Colburn has also been sharp on the defensive side of things, having not made an error in 61 chances this season.

**THE CLOSER**

It's not too often you see a closer in softball, since most teams have their pitcher's go the distance each time they take the ball. But when you have the benefit of three solid pitchers as the Bruins do, a change of pace late in the game can baffle opposing hitters. So to go along with all of her hitting success, add closer to sophomore Megan Langenfeld's repertoire. Langenfeld earned her second career Pac-10 Pitcher of the Week honor on April 29 after posting a 0.00 ERA in 9 1/3 innings and picking up a win and a save against the Bay Area schools. On April 25 at California, the sophomore pitched a four-hitter, allowing two unearned runs while striking out six. One day later at Stanford, Langenfeld relieved freshman Donna Kerr in the fifth and tossed 2 1/3 innings of hitless relief, striking out three to record her fifth save of the year. Langenfeld's save set a new UCLA single-season record and gave her six as a Bruin. She is just one behind the all-time school mark of seven set by Lisa Longaker. Langenfeld, who is 7-1 on the year, enters this week first in the Pac-10 in saves and tied for 10th in the country. She is third on the team and sixth in the conference with a 1.57 ERA and has 57 strikeouts in 53 2/3 innings. The sophomore has only 10 walks on the season and had an amazing stretch of 111 straight batters without issuing a free pass. Another impressive feat was Langenfeld's 27 2/3 scoreless innings streak, which ran from Feb. 27 to April 5. At the plate, Langenfeld is hitting .339, placing first with a .486 on base percentage (sixth in Pac-10), second in walks (27) and home runs (5) and third in runs batted in (33). Langenfeld compiled a team-best eight-game hitting streak from March 8-28 in which she

posted a .455 average (10-for-22). She also drove in a run in six straight games from March 13-30, including a pair of RBI in three of those contests. Langenfeld leads the team with 10 multiple-RBI contests this season.

### SLAMMIN' SAMMY

With a two-hit effort on Sunday against #1 Arizona State, freshman Samantha Camuso moved back to the top spot in batting average at .382. Camuso and fellow freshman GiOnna DiSalvatore have been flip-flopping in the top spot over the last few weeks. But thanks to a .429 average (9-for-21) over the last seven games, Camuso is back in first, also placing third among Pac-10 players. The freshman also leads the team with 15 doubles, is second in slugging (.556), third in on base percentage (.438) and fourth in runs batted in (32). Two weeks ago in the Bay Area, Camuso had a pair of multiple-hit contests, including a 5-for-7 performance in two games at Stanford (April 26-27). With another two-hit effort on Sunday, Camuso moved into third place on the team with 15 multiple-hit contests. She also has seven multi-RBI games and five game-winning RBI. She had a walk-off winner on March 9 against nationally-ranked Long Beach State on a double in the eighth. Eight days before that, Camuso had another game-winner, driving in the go-ahead run on a sacrifice fly in the top of the ninth to help UCLA beat ranked San Diego State. Camuso earned her first Pac-10 Player of the Week honor on April 8 after going 6-for-13 (.462) in four Bruin victories over Washington, Stanford and California. The freshman has two home runs on the season, hitting them both during the opening weekend. Her first career jack came against nationally-ranked Oklahoma on Feb. 8 for UCLA's first homer of the year. One day later, Camuso added a grand slam against Santa Clara. She went 4-for-4 with seven RBI against the Broncos and touched home plate five times to set a new school record for runs scored in a single game. Camuso would have tied another single-game record with her seven runs batted in, but she was eclipsed by teammate Amanda Kamekona's eight RBI.

### TWO HANDFULS OF GAME-WINNERS

Freshman GiOnna DiSalvatore recorded her 10th game-winning RBI of the season on Saturday in the Bruins' 5-0 victory over #1 Arizona State. It was the freshman's solo home run, her third jack of the year, in the second inning that gave the Bruins the only run they would need. DiSalvatore has hits in eight of her last 10 games, holding a .364 average (12-for-33) with three runs scored and two doubles. Four of those 10 games have been two-hit contests, which has moved DiSalvatore into the team lead with 17 multiple-hit games. The freshman leads the club with 39 runs batted in and is third with 27 runs scored, 13 doubles, three home runs and a .542 slugging percentage. A two-time Pac-10 Player of the Week, DiSalvatore ranks in the conference Top 10 in four categories, including fifth in average. DiSalvatore claimed her first Player of the Week award after an opening weekend in which she went 10-for-14 (.714) with nine RBI, five runs scored and four doubles at the Stacy Winsberg Memorial Tournament. DiSalvatore hit her first career home run on Feb. 9 against UC Santa Barbara, a three-run, two-out shot in the bottom of the seventh that tied the game and sent it to extra innings before UCLA won it in the eighth. It was the first of numerous heroic efforts for DiSalvatore, who broke a 2-2 tie with a bases-clearing double in the fifth in a 5-2 win over

nationally-ranked Georgia on Feb. 22, which led to her second POW award. She also drove in the go-ahead run in the top of the seventh on an RBI double in a 2-1 victory over Notre Dame on March 7.

### CASH BACK

Senior Ashley Herrera made her triumphant return to the Bruins' lineup this weekend, starting all three games at third base. The senior missed 38 games after suffering a dislocated left ankle while sliding into third base against Illinois on Feb. 16. Herrera had one hit in six at-bats last weekend, laying down a perfect bunt single on Saturday against #1 Arizona State. She also had a successful sacrifice bunt in her first at-bat in 2 1/2 months on Friday against #10 Arizona. For the season, Herrera has 18 hits in 35 at-bats (.514) with 10 runs scored and four sacrifice hits.

### SELDEN, CAMUSO NAMED TOP 25 FINALISTS FOR USA SOFTBALL PLAYER OF THE YEAR AWARD

Senior pitcher Anjelica Selden and freshman outfielder Samantha Camuso are two of 25 finalists for the 2008 USA Softball Collegiate Player of the Year award, as announced by the Amateur Softball Association on April 9.

The award, which is considered one of the most prestigious honors in collegiate softball, is designed to recognize outstanding athletic achievement by players across the country.

On May 7, a list of 10 finalists will be named from the 25 players on this list. Two weeks later, the list will be cut to three and those players will travel to Oklahoma City for the announcement of the winner at the Women's College World Series Party at the Park on May 27.

Former UCLA great Stacey Nuveman was the inaugural winner of this award in 2002.

### SELDEN A FINALIST FOR LOWE'S SENIOR CLASS AWARD

Senior Anjelica Selden has been named one of 10 finalists for the Lowe's Senior CLASS Award. Nationwide balloting began April 10 and concludes on May 16 at [www.seniorclassaward.com](http://www.seniorclassaward.com) to determine this year's winner.

Fan balloting will be combined with votes from coaches, media and sponsors to determine the recipient of the award. The winner will be announced and presented with the award at the Opening Ceremonies of the NCAA Women's College World Series on May 27. The Lowe's All-Senior All-America Team, based on final results of the balloting, will also be recognized.

An acronym for Celebrating Loyalty and Achievement for Staying in School, the Lowe's Senior CLASS Award has developed into the nation's premier tribute to college seniors. The award, which launched in 2001 with college basketball, is now in its second year for softball.

The finalists were chosen from a list of 30 candidates based on personal qualities that define a complete student-athlete. These four primary areas of criteria include: classroom, community, character and competition.

The idea of an award to salute collegiate seniors was conceived by sportscaster Dick Enberg, who continues to serve as Honorary Chairman. It was inspired by the trend of college basketball players leaving college early to turn professional. The Senior CLASS Award was formed to honor senior student-athletes who fulfill their entire collegiate athletic eligibility, earn a college degree and give back to their community.

### UCLA Home Run Tracker

Player (Year Total)	Date	Opp	On	Inn	Out	Count
1. Camuso (1)	2/8	OKL	1	3	2	1-0
2. Langenfeld (1)	2/9	SCU	1	3	2	1-1
3. Kamekona (1)	2/9	SCU	1	3	2	2-1
4. Camuso (2)	2/9	SCU	3	4	2	0-0
5. DiSalvatore (1)	2/9	UCSB	2	7	2	0-0
<b>6. Shull (1)</b>	<b>2/9</b>	<b>UCSB</b>	<b>1</b>	<b>8</b>	<b>1</b>	<b>0-0</b>
7. Langenfeld (2)	2/15	USC	2	1	1	2-1
8. Kamekona (2)	2/16	PSU	0	1	1	2-1
9. DiSalvatore (2)	2/23	BAY	1	7	0	1-0
10. Kamekona (3)	2/23	HAW	0	1	1	1-2
11. J.Schroeder (1)	2/23	HAW	0	2	1	0-1
12. Burney (1)	2/24	NW	1	4	1	3-1
13. Kamekona (4)	2/24	NW	1	4	2	2-2
14. Shull (2)	2/29	USD	0	5	0	0-0
15. Langenfeld (3)	3/9	NW	1	4	1	0-1
16. Kamekona (5)	3/13	CSUN	0	1	1	2-0
17. Langenfeld (4)	3/13	CSUN	0	3	0	2-2
18. Kamekona (6)	3/13	CSUN	0	4	0	1-0
19. Kamekona (7)	4/6	CAL	2	3	1	2-2
20. J.Schroeder (2)	4/13	ARIZ	0	7	1	1-1
21. Kamekona (8)	4/18	WASH	0	5	1	1-1
22. Langenfeld (5)	4/27	STAN	2	1	1	2-1
23. Colburn (1)	4/27	STAN	0	7	0	2-2
<b>24. Harrison (1)</b>	<b>5/2</b>	<b>ARIZ</b>	<b>0</b>	<b>7</b>	<b>1</b>	<b>2-0</b>
25. DiSalvatore (3)	5/3	ASU	0	2	0	1-2
26. Kamekona (9)	5/3	ASU	0	3	1	1-2
27. Kamekona (10)	5/3	ASU	2	5	1	3-1
28. Kamekona (11)	5/4	ASU	0	5	0	1-1

**Bold: Walk-Off Home Run**

### Game-Winning RBI's and Runs Scored

Game (Score)	RBI	Run	Play (Inn)
NEV (10-1)	DiSalvatore	Langenfeld	2-Run 1B (1)
OKL (6-1)	Langenfeld	Herrera	RBI 2B (1)
SCU (27-1)	Camuso	Herrera	2-Run 1B (1)
<b>UCSB (7-5)</b>	<b>Shull</b>	<b>Kamkeona</b>	<b>2-Run HR (8)</b>
MIZZ (4-0)	Colburn	Herrera	RBI 2B (1)
USC (6-2)	Langenfeld	Langenfeld	3-Run HR (1)
PSU (7-4)	DiSalvatore	Colburn	2-Run 1B (5)
WISC (4-1)	DiSalvatore	Kamekona	2-Run 2B (1)
MASS (4-2)	Harrison	Crawford	RBI 1B (6)
GA (5-2)	DiSalvatore	Colburn	3-Run 2B (5)
BAY (6-1)	Harrison	Colburn	Bases Loaded HBP (1)
HAW (3-0)	Kamekona	Kamekona	Solo HR (1)
NW (6-2)	Burney	Burney	2-Run HR (4)
CSUB (3-0)	-	K.Schroeder	Error by 2B (1)
JMU (8-0)	-	Colburn	Error by SS (1)
USD (10-0)	DiSalvatore	Kamekona	2-Run 2B (4)
EMU (8-0)	Langenfeld	Kamekona	Sac Fly (1)
SDSU (2-1)	Camuso	Colburn	Sac Fly (9)
SPC (10-0)	-	K.Schroeder	Error by P (1)
UNLV (1-0)	Burney	Camuso	RBI 1B (5)
VT (1-0)	Colburn	K.Schroeder	RBI 1B (3)
ND (3-2)	DiSalvatore	Colburn	RBI 2B (7)
RUT (9-0)	-	Kamekona	SB of Home (1)
NW (2-0)	Langenfeld	DiSalvatore	2-Run HR (4)
<b>LBSU (1-0)</b>	<b>Camuso</b>	<b>Murray</b>	<b>RBI 2B (8)</b>
CSUN (7-0)	Kamekona	Kamekona	Solo HR (1)
UCSB-1 (7-2)	Camuso	Crawford	RBI 1B (5)
UCSB-2 (8-1)	K.Schroeder	Shull	RBI 2B (5)
OSU (3-0)	Langenfeld	K.Schroeder	2-Run 1B (3)
ORE (2-0)	DiSalvatore	Kamekona	RBI 1B (1)
ORE (12-0)	DiSalvatore	K.Schroeder	Bases Loaded BB (1)
<b>WASH (7-6)</b>	<b>DiSalvatore</b>	<b>Burney</b>	<b>Bases Loaded BB (8)</b>
STAN (3-1)	Kamekona	Mirabal	RBI 2B (3)
CAL (2-1)	Kamekona	Burney	Bases Loaded BB (2)
CAL (5-0)	Kamekona	K.Schroeder	3-Run HR (3)
ARIZ (2-1)	J.Schroeder	J.Schroeder	Solo HR (7)
WASH (2-1)	Kamekona	Kamekona	Solo HR (5)
WASH (4-0)	Kamekona	Colburn	RBI 2B (1)
CAL (7-2)	K.Schroeder	DiSalvatore	Bases Loaded BB (4)
STAN (1-0)	Camuso	DiSalvatore	RBI 2B (4)
STAN (4-1)	Langenfeld	Kamekona	3-Run HR (1)
<b>ARIZ (2-1)</b>	<b>Harrison</b>	<b>Harrison</b>	<b>Solo HR (7)</b>
ASU (5-0)	DiSalvatore	DiSalvatore	Solo HR (2)

**Game-Winning RBI:** DiSalvatore (10), Kamekona (7), Langenfeld (6), Camuso (5), Harrison (3), Burney (2), Colburn (2), K.Schroeder (2), J.Schroeder (1), Shull (1).

**Game-Winning Runs:** Kamekona (10), Colburn (7), K.Schroeder (6), DiSalvatore (4), Burney (3), Herrera (3), Crawford (2), Langenfeld (2), Camuso (1), Harrison (1), Mirabal (1), Murray (1), J.Schroeder (1), Shull (1).

**Bold: Walk-Off RBI**



## 2008 Pacific-10 Conference Softball Standings

	CONFERENCE					OVERALL						
	W	L	Pct	H	A	W	L	T	Pct	H	A	N
#2 Arizona State	16	2	.889	7-1	9-1	54	4	0	.931	38-1	9-2	7-1
<b>#3 UCLA</b>	<b>15</b>	<b>3</b>	<b>.833</b>	<b>9-1</b>	<b>6-2</b>	<b>43</b>	<b>6</b>	<b>0</b>	<b>.878</b>	<b>16-3</b>	<b>10-2</b>	<b>17-1</b>
#8 Stanford	10	8	.556	6-5	4-3	45	10	0	.818	27-5	6-3	12-2
#9 Arizona	10	8	.556	4-3	6-5	33	16	0	.673	17-4	7-7	9-5
#23 California	7	11	.389	5-5	2-6	40	21	0	.656	10-5	4-9	26-7
#24 Washington	5	12	.294	3-7	2-5	26	21	1	.552	6-8	3-7-1	17-6
Oregon	4	13	.235	2-5	2-8	32	24	0	.571	11-6	6-9	15-9
Oregon State	4	14	.222	1-7	3-7	26	29	0	.473	9-7	5-11	12-11

## This Week in the Pac-10

## Tuesday, May 6

Oregon State at Portland State 6 p.m.

## Thursday, May 8

**UCLA at Oregon**<sup>1</sup> 4 p.m.Washington at Oregon State<sup>1</sup> 3 p.m.California at Arizona<sup>1</sup> 7 p.m.Stanford at Arizona State<sup>1</sup> 7 p.m.

## Friday, May 9

**UCLA at Oregon State**<sup>1</sup> 3 p.m.Washington at Oregon (DH)<sup>1</sup> 1:30 p.m.Stanford at Arizona<sup>1</sup> 7 p.m.California at Arizona State<sup>1</sup> 7 p.m.

## Saturday, May 10

**UCLA at Oregon State**<sup>1</sup> 12 p.m.Stanford at Arizona<sup>1</sup> 12 p.m.California at Arizona State<sup>1</sup> 12 p.m.Washington at Oregon<sup>1</sup> 1:30 p.m.

1 - Pacific-10 Conference Games

All Times Pacific

## Last Week in the Pac-10

## Tuesday, April 29

Oregon 2, Oregon State 1

## Wednesday, April 30

California 1, UC Davis 0

Oregon 8, Portland State 4

## Friday, May 2

**UCLA 2, Arizona** 1<sup>1</sup>Arizona State 3, Washington 0<sup>1</sup>California 9, Oregon State 1 (5 innings)<sup>1</sup>Stanford 6, Oregon 0<sup>1</sup>

## Saturday, May 3

**UCLA 5, Arizona State** 0<sup>1</sup>California 6, Oregon 1<sup>1</sup>Arizona 3, Washington 0<sup>1</sup>Stanford 4, Oregon State 2<sup>1</sup>

## Sunday, May 4

**Arizona State 5, UCLA** 2<sup>1</sup>Arizona 3, Washington 0<sup>1</sup>Oregon 4, California 1<sup>1</sup>Stanford 2, Oregon State 1 (8 innings)<sup>1</sup>

1 - Pacific-10 Conference Games

All Times Pacific

Home Team Underlined



## Pac-10 Players &amp; Pitchers of the Week

Player	Date	Pitcher
<b>G.DiSalvatore, UCLA</b>	<b>2/12</b>	M.Penna, STAN
K.Cochran, ASU	2/19	K.Burkhart, ASU
<b>G.DiSalvatore, UCLA</b>	<b>2/26</b>	<b>A.Selden, UCLA</b>
R.Neill, STAN	3/4	<b>D.Kerr, UCLA</b>
M.Stuart, WASH	3/11	<b>A.Selden, UCLA</b>
A.Roderfeld, OSU	3/18	M.Drewrey, CAL
R.Neill, STAN	3/25	K.Burkhart, ASU
G.Leomiti, CAL	4/1	<b>A.Selden, UCLA</b>
<b>S.Camuso, UCLA</b>	<b>4/8</b>	T.Mowatt, ARIZ
K.Arredondo, ARIZ	4/15	K.Burkhart, ASU
K.Donnenwirth, ASU	4/22	M.Penna, STAN
K.Miller, ASU	4/29	<b>M.Langefeld, UCLA</b>
<b>A.Kamekona, UCLA</b>	<b>5/6</b>	T.Mowatt, ARIZ

## UCLA Rankings in the Pac-10

<b>Batting Average</b>	2nd (.316)
<b>Slugging Percentage</b>	3rd (.449)
<b>On Base Percentage</b>	3rd (.391)
<b>Runs Scored</b>	5th (240)
<b>Hits</b>	T-3rd (409)
<b>Runs Batted In</b>	5th (217)
<b>Doubles</b>	4th (77)
<b>Triples</b>	T-3rd (6)
<b>Home Runs</b>	T-6th (28)
<b>Total Bases</b>	5th (582)
<b>Walks</b>	5th (143)
<b>Hit by Pitch</b>	5th (23)
<b>Sacrifice Hits</b>	5th (36)
<b>Sacrifice Flies</b>	T-3rd (9)
<b>Stolen Bases</b>	6th (38)
<b>Earned Run Average</b>	1st (0.95)
<b>Opposing Batting Average</b>	1st (.150)
<b>Strikeouts</b>	2nd (443)
<b>Fielding Percentage</b>	1st (.975)

## Bruins in the Pac-10 Rankings

<b>Amanda Kamekona</b>	
Slugging Percentage	9th (.654)
Doubles	7th (14)
Triples	T-3rd (2)
Home Runs	T-9th (11)
Total Bases	5th (102)
Sacrifice Hits	6th (10)
<b>Megan Langefeld</b>	
On Base Percentage	6th (.468)
Walks	T-10th (27)
Earned Run Average	6th (1.57)
Opposing Batting Average	5th (.157)
Saves	1st (5)
<b>Anjelica Selden</b>	
Earned Run Average	1st (0.78)
Opposing Batting Average	3rd (.149)
Strikeouts	5th (249)
Wins	4th (22)
Saves	T-4th (2)
<b>GiOnna DiSalvatore</b>	
Batting Average	5th (.373)
Hits	10th (57)
Doubles	T-8th (13)
Triples	T-3rd (2)
<b>Donna Kerr</b>	
Earned Run Average	2nd (0.86)
Opposing Batting Average	2nd (.147)
Strikeouts	10th (132)
Wins	10th (14)
<b>Samantha Camuso</b>	
Batting Average	3rd (.382)
Doubles	T-4th (15)
Triples	T-3rd (2)
<b>Krista Colburn</b>	
On Base Percentage	9th (.453)
Walks	7th (30)
Sacrifice Flies	T-4th (3)
<b>Katie Schroeder</b>	
Batting Average	T-7th (.364)

2008 UCLA Softball  
Overall Statistics for UCLA (as of May 04, 2008)  
(All games Sorted by Batting avg)

Record: 43-6 Home: 16-3 Away: 10-2 Neutral: 17-1 Pac-10: 15-3

Player	AVG	GP-GS	AB	R	H	2B	3B	HR	RBI	TB	SLG%	BB	HBP	SO	GDP	OB%	SF	SH	SB-ATT	PO	A	E	FLD%
7 Camuso, Samantha.	.382	49-49	144	21	55	15	2	2	32	80	.556	13	2	28	2	.438	1	2	1-1	24	1	1	.962
3 DiSalvatore, GiOn	.373	49-49	153	27	57	13	2	3	39	83	.542	14	2	20	1	.432	0	2	1-1	184	22	4	.981
29 Schroeder, Katie.	.364	47-47	154	26	56	5	0	0	12	61	.396	17	2	28	1	.431	1	5	7-13	35	1	1	.973
13 Colburn, Krista..	.341	48-48	138	35	47	8	0	1	22	58	.420	30	1	16	2	.453	3	4	4-6	59	2	0	1.000
31 Langenfeld, Megan	.339	45-45	124	18	42	6	0	5	33	63	.508	27	4	15	1	.468	1	1	0-0	81	7	2	.978
47 Kamekona, Amanda.	.327	49-49	156	39	51	14	2	11	36	102	.654	15	0	15	0	.384	1	10	8-10	80	64	3	.980
18 Harrison, Monica.	.256	44-44	121	17	31	6	0	1	15	40	.331	8	3	14	1	.316	1	0	3-4	44	72	7	.943
9 Shull, Kaila.....	.204	21-17	54	6	11	2	0	2	7	19	.352	1	2	16	0	.246	0	2	2-2	99	5	1	.990
27 Schroeder, Jennif	.200	43-41	110	5	22	5	0	2	11	33	.300	2	4	40	0	.239	1	6	0-0	346	15	2	.994
14 Burney, Julie....	.181	43-41	105	9	19	3	0	1	10	25	.238	16	2	26	0	.301	0	0	0-0	33	64	4	.960
-----																							
11 Herrera, Ashley..	.514	11-11	35	10	18	0	0	0	0	18	.514	0	1	5	0	.528	0	4	4-5	9	17	1	.963
10 Mirabal, Lauren..	.000	30-0	1	14	0	0	0	0	0	0	.000	0	0	0	0	.000	0	0	8-8	0	0	0	.000
23 Crawford, Amy....	.000	23-1	1	10	0	0	0	0	0	0	.000	0	0	0	0	.000	0	0	0-0	0	0	0	.000
21 Murray, Grace....	.000	5-0	0	3	0	0	0	0	0	0	.000	0	0	0	0	.000	0	0	0-0	0	0	0	.000
20 Baker, Whitney...	.000	1-1	0	0	0	0	0	0	0	0	.000	0	0	0	0	.000	0	0	0-0	0	0	0	.000
4 Selden, Anjelica.	.000	2-2	0	0	0	0	0	0	0	0	.000	0	0	0	0	.000	0	0	0-0	3	26	6	.829
5 Kerr, Donna.....	.000	2-2	0	0	0	0	0	0	0	0	.000	0	0	0	0	.000	0	0	0-0	2	7	1	.900
Totals.....	.316	49-49	1296	240	409	77	6	28	217	582	.449	143	23	223	8	.391	9	36	38-50	999	303	33	.975
Opponents.....	.150	49-49	1149	72	172	33	6	9	57	244	.212	61	45	443	5	.220	6	24	26-33	939	346	62	.954

LOB - Team (332), Opp (217). DP's turned - Team (14), Opp (16). CI - Team (0), Opp (1). IBB - Team (1), Langenfeld 1. Picked off - Colburn 1, Schroeder, K 1.

(All games Sorted by Earned run avg)

Player	ERA	W-L	APP	GS	CG	SHO/CBO	SV	IP	H	R	ER	BB	SO	2B	3B	HR	AB	B/Avg	WP	HBP	BK	SFA	SHA
4 Selden, Anjelica.	0.78	22-3	29	25	20	6/3	2	170.2	88	32	19	24	249	17	3	5	591	.149	9	16	0	1	14
5 Kerr, Donna.....	0.86	14-2	19	18	8	5/5	0	105.2	53	24	13	26	132	8	1	2	361	.147	2	25	0	1	8
31 Langenfeld, Megan	1.57	7-1	18	6	2	1/8	5	53.2	29	15	12	10	57	8	2	1	185	.157	0	4	0	4	2
20 Baker, Whitney...	2.33	0-0	2	0	0	0/0	0	3.0	2	1	1	1	5	0	0	1	12	.167	1	0	0	0	0
Totals.....	0.95	43-6	49	49	30	20/8	7	333.0	172	72	45	61	443	33	6	9	1149	.150	12	45	0	6	24
Opponents.....	3.98	6-43	49	49	29	4/0	1	313.0	409	240	178	143	223	77	6	28	1296	.316	21	23	0	9	36

PB - Team (9), Schroeder, J 6, Shull 3, Opp (10). Pickoffs - Team (2), Schroeder, J 1, Shull 1, Opp (2). SBA/ATT - Schroeder, J (19-25), Kerr (13-15), Selden (8-13), Shull (7-8), Langenfeld (5-5).

## 2008 UCLA Softball

Conference statistics for UCLA (as of May 04, 2008)

(Pac-10 games only Sorted by Batting avg)

Record: 15-3 Home: 9-1 Away: 6-2 Pac-10: 15-3

Player	AVG	GP-GS	AB	R	H	2B	3B	HR	RBI	TB	SLG%	BB	HBP	SO	GDP	OB%	SF	SH	SB-ATT	PO	A	E	FLD%
7 Camuso, Samantha.	.353	18-18	51	3	18	4	1	0	5	24	.471	2	1	11	0	.389	0	1	0-0	14	0	0	1.000
29 Schroeder, Katie.	.333	18-18	54	8	18	2	0	0	3	20	.370	7	2	12	1	.422	1	1	3-6	19	1	0	1.000
3 DiSalvatore, GiOn	.327	18-18	55	6	18	2	0	1	6	23	.418	6	0	8	1	.393	0	0	0-0	83	5	2	.978
13 Colburn, Krista..	.327	18-18	52	13	17	2	0	1	6	22	.423	11	1	6	1	.446	1	1	2-2	33	0	0	1.000
47 Kamekona, Amanda.	.316	18-18	57	9	18	5	0	5	12	38	.667	4	0	9	0	.361	0	3	1-1	31	23	1	.982
31 Langenfeld, Megan	.250	18-18	48	4	12	1	0	1	14	16	.333	11	1	5	0	.400	0	0	0-0	5	1	0	1.000
27 Schroeder, Jennif	.211	16-15	38	1	8	2	0	1	4	13	.342	1	2	18	0	.268	0	1	0-0	119	5	1	.992
18 Harrison, Monica.	.184	18-18	49	8	9	3	0	1	6	15	.306	4	0	7	1	.241	1	0	2-3	19	35	3	.947
14 Burney, Julie....	.135	16-15	37	4	5	0	0	0	3	5	.135	8	0	13	0	.289	0	0	0-0	13	24	1	.974
-----																							
11 Herrera, Ashley..	.167	3-3	6	0	1	0	0	0	0	1	.167	0	0	4	0	.167	0	1	0-0	1	6	0	1.000
9 Shull, Kaila.....	.111	4-3	9	0	1	0	0	0	2	1	.111	0	0	5	0	.111	0	1	0-0	27	0	0	1.000
4 Selden, Anjelica.	.000	2-2	0	0	0	0	0	0	0	0	.000	0	0	0	0	.000	0	0	0-0	2	5	0	1.000
21 Murray, Grace....	.000	1-0	0	0	0	0	0	0	0	0	.000	0	0	0	0	.000	0	0	0-0	0	0	0	.000
23 Crawford, Amy....	.000	6-0	0	3	0	0	0	0	0	0	.000	0	0	0	0	.000	0	0	0-0	0	0	0	.000
10 Mirabal, Lauren..	.000	10-0	0	4	0	0	0	0	0	0	.000	0	0	0	0	.000	0	0	0-0	0	0	0	.000
5 Kerr, Donna.....	.000	1-1	0	0	0	0	0	0	0	0	.000	0	0	0	0	.000	0	0	0-0	0	1	0	1.000
Totals.....	.274	18-18	456	63	125	21	1	10	61	178	.390	54	7	98	4	.358	3	9	8-12	366	106	8	.983
Opponents.....	.171	18-18	432	30	74	15	2	4	27	105	.243	32	13	147	4	.247	4	7	13-13	348	120	15	.969

LOB - Team (118), Opp (92). DP's turned - Team (6), Opp (7).

(Pac-10 games only Sorted by Earned run avg)

Player	ERA	W-L	APP	GS	CG	SHO/CBO	SV	IP	H	R	ER	BB	SO	2B	3B	HR	AB	B/Avg	WP	HBP	BK	SFA	SHA
4 Selden, Anjelica.	0.70	9-1	13	10	7	2/3	1	69.2	41	8	7	15	92	7	1	3	246	.167	4	5	0	0	7
5 Kerr, Donna.....	2.01	3-1	5	5	0	0/2	0	24.1	15	10	7	8	25	2	0	0	86	.174	2	6	0	1	0
31 Langenfeld, Megan	2.50	3-1	10	3	1	0/5	4	28.0	18	12	10	9	30	6	1	1	100	.180	0	2	0	3	0
Totals.....	1.38	15-3	18	18	8	7/5	5	122.0	74	30	24	32	147	15	2	4	432	.171	6	13	0	4	7
Opponents.....	2.96	3-15	18	18	14	2/0	1	116.0	125	63	49	54	98	21	1	10	456	.274	6	7	0	3	9

PB - Team (4), Schroeder, J 3, Shull 1, Opp (4). Pickoffs - Team (1), Schroeder, J 1. SBA/ATT - Schroeder, J (8-8), Shull (5-5), Selden (5-5), Langenfeld (5-5), Kerr (3-3).



2008 UCLA Softball  
Game Results for UCLA (as of May 04, 2008)  
(All games)

Game date	Opposing team	Score	r	h	e/	r	h	e	Inns	Overall	Pac-10	Pitcher of record	Attend	Time
-----	-----	-----	-----	-----	-----	-----	-----	-----	-----	-----	-----	-----	-----	-----
!Feb 08, 2008	NEVADA	W 10-1	10	12	1/	1	4	5	5	1- 0- 0	0- 0- 0	Langenfeld (W 1-0)	566	1:56
!Feb 08, 2008	#5 OKLAHOMA	W 6-1	6	14	0/	1	4	1	7	2- 0- 0	0- 0- 0	Kerr (W 1-0)	566	2:20
!Feb 09, 2008	SANTA CLARA	W 27-1	27	22	0/	1	1	1	5	3- 0- 0	0- 0- 0	Selden (W 1-0)	502	2:13
!Feb 09, 2008	UC SANTA BARBARA	W 7-5	7	8	4/	5	8	0	( 8)	4- 0- 0	0- 0- 0	Kerr (W 2-0)	502	2:35
!Feb 10, 2008	#5 OKLAHOMA	0-7 L	0	3	2/	7	8	0	7	4- 1- 0	0- 0- 0	Selden (L 1-1)	297	2:15
#Feb 15, 2008	vs #22 Missouri	W 4-0	4	8	1/	0	3	4	7	5- 1- 0	0- 0- 0	Kerr (W 3-0)	203	1:59
#Feb 15, 2008	vs South Carolina	W 6-2	6	14	1/	2	4	3	7	6- 1- 0	0- 0- 0	Selden (W 2-1)	203	2:05
#Feb 16, 2008	vs Illinois	2-6 L	2	8	1/	6	10	2	7	6- 2- 0	0- 0- 0	Kerr (L 3-1)	212	2:25
#Feb 16, 2008	vs Portland State	W 7-4	7	7	1/	4	4	0	7	7- 2- 0	0- 0- 0	Selden (W 3-1)	88	2:20
#Feb 17, 2008	vs Wisconsin	W 4-1	4	8	1/	1	1	1	7	8- 2- 0	0- 0- 0	Selden (W 4-1)	124	1:58
\$Feb 22, 2008	vs Massachusetts	W 4-2	4	8	2/	2	3	3	7	9- 2- 0	0- 0- 0	Kerr (W 4-1)	389	2:21
\$Feb 22, 2008	vs #18 Georgia	W 5-2	5	7	1/	2	2	0	7	10- 2- 0	0- 0- 0	Selden (W 5-1)	541	2:27
\$Feb 23, 2008	vs #10 Baylor	W 6-1	6	10	1/	1	4	1	7	11- 2- 0	0- 0- 0	Selden (W 6-1)	864	1:55
\$Feb 23, 2008	vs #14 Hawai'i	W 3-0	3	10	0/	0	1	0	7	12- 2- 0	0- 0- 0	Kerr (W 5-1)	327	1:45
\$Feb 24, 2008	vs #2 Northwestern	W 6-2	6	6	1/	2	4	2	7	13- 2- 0	0- 0- 0	Selden (W 7-1)	1092	1:57
Feb 27, 2008	CS BAKERSFIELD	W 3-0	3	10	1/	0	2	2	7	14- 2- 0	0- 0- 0	Kerr (W 6-1)	183	1:35
%Feb 29, 2008	vs James Madison	W 8-0	8	9	0/	0	1	5	5	15- 2- 0	0- 0- 0	Selden (W 8-1)	197	1:23
%Feb 29, 2008	at San Diego	W 10-0	10	14	0/	0	1	1	6	16- 2- 0	0- 0- 0	Kerr (W 7-1)	168	2:03
%Mar 01, 2008	vs Eastern Michigan	W 8-0	8	9	0/	0	1	2	6	17- 2- 0	0- 0- 0	Langenfeld (W 2-0)	106	1:35
%Mar 01, 2008	at #20 San Diego State	W 2-1	2	5	1/	1	4	2	( 9)	18- 2- 0	0- 0- 0	Selden (W 9-1)	967	2:07
%Mar 02, 2008	vs Saint Peter's	W 10-0	10	11	0/	0	0	2	5	19- 2- 0	0- 0- 0	Kerr (W 8-1)	137	0:58
Mar 05, 2008	UNLV	W 1-0	1	4	0/	0	1	1	7	20- 2- 0	0- 0- 0	Selden (W 10-1)	178	1:33
&Mar 07, 2008	vs #24 Virginia Tech	W 1-0	1	3	0/	0	1	2	7	21- 2- 0	0- 0- 0	Selden (W 11-1)	300	1:44
&Mar 07, 2008	vs Notre Dame	W 3-2	3	8	1/	2	4	2	7	22- 2- 0	0- 0- 0	Langenfeld (W 3-0)	342	2:08
&Mar 08, 2008	vs Rutgers	W 9-0	9	14	0/	0	3	2	7	23- 2- 0	0- 0- 0	Langenfeld (W 4-0)	447	2:06
&Mar 09, 2008	vs #8 Northwestern	W 2-0	2	5	1/	0	2	0	7	24- 2- 0	0- 0- 0	Kerr (W 9-1)	711	1:52
&Mar 09, 2008	vs Long Beach State	W 1-0	1	7	0/	0	6	0	( 8)	25- 2- 0	0- 0- 0	Selden (W 12-1)	711	2:15
Mar 12, 2008	CAL STATE FULLERTON	0-1 L	0	4	0/	1	2	0	( 8)	25- 3- 0	0- 0- 0	Selden (L 12-2)	177	2:01
Mar 13, 2008	CAL STATE NORTHBRIDGE	W 7-0	7	11	0/	0	1	1	7	26- 3- 0	0- 0- 0	Kerr (W 10-1)	144	2:10
Mar 25, 2008	at UC Santa Barbara	W 7-2	7	12	2/	2	5	0	7	27- 3- 0	0- 0- 0	Selden (W 13-2)	211	2:37
Mar 25, 2008	at UC Santa Barbara	W 8-1	8	13	2/	1	3	2	7	28- 3- 0	0- 0- 0	Kerr (W 11-1)	211	2:26
*Mar 28, 2008	OREGON STATE	W 3-0	3	8	0/	0	2	0	7	29- 3- 0	1- 0- 0	Selden (W 14-2)	325	1:38
*Mar 29, 2008	OREGON	W 2-0	2	2	0/	0	4	1	7	30- 3- 0	2- 0- 0	Kerr (W 12-1)	773	1:48
*Mar 30, 2008	OREGON	W 12-0	12	9	0/	0	6	2	5	31- 3- 0	3- 0- 0	Selden (W 15-2)	1205	2:04
*Apr 02, 2008	#24 WASHINGTON	W 7-6	7	6	1/	6	6	1	( 8)	32- 3- 0	4- 0- 0	Selden (W 16-2)	216	2:50
*Apr 04, 2008	#7 STANFORD	W 3-1	3	4	1/	1	4	3	7	33- 3- 0	5- 0- 0	Langenfeld (W 5-0)	324	2:20
*Apr 05, 2008	#21 CALIFORNIA	W 2-1	2	7	0/	1	1	0	7	34- 3- 0	6- 0- 0	Kerr (W 13-1)	632	2:04
*Apr 06, 2008	#21 CALIFORNIA	W 5-0	5	11	1/	0	5	1	7	35- 3- 0	7- 0- 0	Selden (W 17-2)	1117	2:11
*Apr 11, 2008	at #1 Arizona State	0-3 L	0	3	0/	3	4	0	7	35- 4- 0	7- 1- 0	Selden (L 17-3)	1969	1:46
*Apr 12, 2008	at #7 Arizona	0-8 L	0	6	1/	8	7	0	6	35- 5- 0	7- 2- 0	Kerr (L 13-2)	2318	2:00
*Apr 13, 2008	at #7 Arizona	W 2-1	2	5	0/	1	5	1	7	36- 5- 0	8- 2- 0	Selden (W 18-3)	1589	2:14
*Apr 18, 2008	at #20 Washington	W 2-1	2	10	1/	1	3	1	7	37- 5- 0	9- 2- 0	Selden (W 19-3)	336	2:20
*Apr 19, 2008	at #20 Washington	W 4-0	4	9	0/	0	2	1	7	38- 5- 0	10- 2- 0	Langenfeld (W 6-0)	771	2:02
*Apr 25, 2008	at #21 California	W 7-2	7	9	1/	2	4	1	7	39- 5- 0	11- 2- 0	Langenfeld (W 7-0)	222	2:27
*Apr 26, 2008	at #7 Stanford	W 1-0	1	6	1/	0	5	1	7	40- 5- 0	12- 2- 0	Kerr (W 14-2)	698	1:59
*Apr 27, 2008	at #7 Stanford	W 4-1	4	10	1/	1	3	1	7	41- 5- 0	13- 2- 0	Selden (W 20-3)	1288	2:10
*May 02, 2008	#10 ARIZONA	W 2-1	2	4	0/	1	2	0	7	42- 5- 0	14- 2- 0	Selden (W 21-3)	575	2:07
*May 03, 2008	#1 ARIZONA STATE	W 5-0	5	7	0/	0	5	1	7	43- 5- 0	15- 2- 0	Selden (W 22-3)	1065	2:07
*May 04, 2008	#1 ARIZONA STATE	2-5 L	2	9	0/	5	6	0	7	43- 6- 0	15- 3- 0	Langenfeld (L 7-1)	1193	2:25

! - Stacy Winsberg Memorial Tournament (Easton Stadium)

# - UNLV Louisville Slugger Desert Classic (Las Vegas)

\$ - Palm Springs Classic (Cathedral City, Calif.)

% - San Diego Classic I (San Diego, Calif.)

&amp; - Long Beach State Invitational (Lakewood, Calif.)

\* = Pac-10 Conference Games

() extra inning game

**2008 GAME-BY-GAME BOX SCORES****Game 1 #10 UCLA 10, Nevada 1 (5 innings)**  
**Fri., Feb. 8 • Easton Stadium • Los Angeles**

	123	45		R	H	E
#10 UCLA	3 0 0	5 2		10	12	1
Nevada	0 1 0	0 0		1	4	5

Win - Langenfeld (1-0), Loss - McPherson (0-1)

Time: 1:56, Attendance: 566

G.DiSalvatore: 2-for-3, 4 RBI, 1 2B

A.Kamekona: 2-for-4, 2 R, 2 RBI, 1 2B, 1 SB

M.Langenfeld: 4 IP, 3 H, 0 ER, 1 BB, 3 K

**Game 2 #10 UCLA 6, #5 Oklahoma 1**  
**Fri., Feb. 8 • Easton Stadium • Los Angeles**

	123	456	7		R	H	E
#5 Oklahoma	0 1 0	0 0 0	0		1	4	1
#10 UCLA	2 1 2	0 1 0	X		6	14	0

Win - Kerr (1-0), Loss - Eckermann (0-1)

HR: Camuso (1)

Time: 2:20, Attendance: 566

D.Kerr: 7 IP, 4 H, 1 ER, 3 BB, 9 K

S.Camuso: 2-for-3, 2 R, 2 RBI, 1 2B, 1 HR

A.Herrera: 3-for-4, 1 R, 1 SB

**Game 3 #10 UCLA 27, Santa Clara 1 (5 innings)**  
**Sat., Feb. 9 • Easton Stadium • Los Angeles**

	123	45		R	H	E
Santa Clara	0 0 0	1 0		1	1	1
#10 UCLA	6 6 11	4 X		27	22	0

Win - Selden (1-0), Loss - Passafiume (0-1)

HR: Godfrey (SC), Langenfeld (1), Camuso (2), Kamekona (1)

Time: 1:43, Attendance: 502

A.Kamekona: 3-for-4, 3 R, 8 RBI (school record), 2 2B, 1 HR

S.Camuso: 4-for-4, 5 R (school record), 7 RBI, 1 HR

K.Schroeder: 4-for-5, 3 R, 4 RBI, 1 2B

**Game 4 #10 UCLA 7, UC Santa Barbara 5 (8 inn.)**  
**Sat., Feb. 9 • Easton Stadium • Los Angeles**

	123	456	78		R	H	E
UC Santa Barbara	0 1 2	0 0 2	0 0		5	8	0
#10 UCLA	2 0 0	0 0 0	3 2		7	8	4

Win - Kerr (2-0), Loss - Matsumoto (0-1)

HR: DiSalvatore (1), Shull (1)

Time: 2:35, Attendance: 502

G.DiSalvatore: 3-for-3, 1 R, 4 RBI, 1 2B, 1 HR

D.Kerr: 8 IP, 8 H, 2 ER, 1 BB, 5 K

K.Shull: 1-for-4, 1 R, 2 RBI, GW HR

**Game 5 #5 Oklahoma 7, #10 UCLA 0**  
**Sun., Feb. 10 • Easton Stadium • Los Angeles**

	123	456	7		R	H	E
#10 UCLA	0 0 0	0 0 0	0		0	3	2
#5 Oklahoma	1 0 2	0 2 2	X		7	8	0

Win - Mathis (3-0), Loss - Selden (1-1)

Time: 2:15, Attendance: 297

A.Selden: 6 IP, 8 H, 5 ER, 0 BB, 9 K

S.Camuso: 1-for-3, 1 2B

A.Kamekona: 1-for-3, 1 2B

**Game 6 #6 UCLA 4, #22 Missouri 0**  
**Fri., Feb. 17 • Eller Media Stadium • Las Vegas**

	123	456	7		R	H	E
#22 Missouri	0 0 0	0 0 0	0		0	3	4
#6 UCLA	1 0 2	1 0 0	X		4	8	1

Win - Kerr (3-0), Loss - Delaney (1-2)

Time: 1:59, Attendance: 203

A.Herrera: 3-for-4, 2 R, 1 SB

D.Kerr: 7 IP, 3 H, 0 ER, 2 BB, 8 K

K.Colburn: 2-for-4, 1 RBI, 1 2B

**Game 7 #6 UCLA 6, South Carolina 2**  
**Fri., Feb. 17 • Eller Media Stadium • Las Vegas**

	123	456	7		R	H	E
#6 UCLA	3 1 0	0 1 1	0		6	14	1
South Carolina	1 0 0	0 1 0	0		2	4	3

Win - Selden (2-1), Loss - Hendon (0-3)

HR - Langenfeld (2)

Time: 2:05, Attendance: 203

A.Herrera: 4-for-5, 2 R, 1 SB

A.Selden: 7 IP, 4 H, 1 ER, 1 BB, 7 K

M.Langenfeld: 2-for-4, 1 R, 3 RBI, 1 HR

**Game 8 Illinois 6, #6 UCLA 2**  
**Sat., Feb. 18 • Eller Media Stadium • Las Vegas**

	123	456	7		R	H	E
Illinois	0 0 0	1 3 1	1		6	10	2
#6 UCLA	0 0 0	0 0 0	2		2	8	1

Win - DeVreese (5-2), Loss - Kerr (3-1)

Time: 2:25, Attendance: 212

M.Langenfeld: 2-for-4, 1 RBI

A.Herrera: 2-for-4

S.Camuso: 1-for-4, 1 RBI

**Game 9 #6 UCLA 7, Portland State 4**  
**Sat., Feb. 18 • Eller Media Stadium • Las Vegas**

	123	456	7		R	H	E
#6 UCLA	1 0 2	0 3 0	1		7	7	1
Portland State	0 0 0	0 0 0	4		4	4	0

Win - Selden (3-1), Loss - Hill (2-3)

HR - Kamekona (2)

Time: 2:20, Attendance: 88

G.DiSalvatore: 3-for-4, 1 R, 4 RBI

A.Selden: 7 IP, 4 H, 0 ER, 0 BB, 12 K

A.Kamekona: 1-for-2, 3 R, 1 RBI, 2 BB, 3 SB

**Game 10 #6 UCLA 4, Wisconsin 1**  
**Sun., Feb. 19 • Stephanie Craig Park • Henderson**

	123	456	7		R	H	E
#6 UCLA	2 0 0	0 0 1	1		4	8	1
Wisconsin	0 0 0	0 0 1	0		1	1	1

Win - Selden (4-1), Loss - Olivarez (2-3)

HR - Daniels (WISC)

Time: 1:58, Attendance: 124

A.Selden: 7 IP, 1 H, 1 ER, 0 BB, 6 K

A.Kamekona: 2-for-3, 2 R, 1 3B

G.DiSalvatore: 1-for-3, 2 RBI, 1 2B

**Game 11 #5 UCLA 4, Massachusetts 2**  
**Fri., Feb. 22 • Big League Dreams Park • Cathedral City**

	123	456	7		R	H	E
Massachusetts	0 0 0	0 1 0	1		2	3	3
#5 UCLA	2 0 0	0 0 2	X		4	8	2

Win - Kerr (4-1), Loss - Balschmiter (2-2), Save - Selden (1)

HR - Normandin (MASS)

Time: 2:21, Attendance: 389

M.Harrison: 2-for-3, 2 RBI, 1 SB

G.DiSalvatore: 2-for-3, 1 R

D.Kerr: 6 IP, 3 H, 1 ER, 4 BB, 7 K

**Game 12 #5 UCLA 5, #18 Georgia 2**  
**Fri., Feb. 22 • Big League Dreams Park • Cathedral City**

	123	456	7		R	H	E
#18 Georgia	2 0 0	0 0 0	0		2	2	0
#5 UCLA	0 0 0	0 3 2	X		5	7	1

Win - Selden (5-1), Loss - McCloud (2-1)

Time: 2:27, Attendance: 541

A.Selden: 7 IP, 2 H, 2 ER, 2 BB, 13 K

G.DiSalvatore: 1-for-2, 3 RBI, 1 BB, 1 2B, GW RBI

M.Harrison: 2-for-3, 1 R

**Game 13 #5 UCLA 6, #10 Baylor 1**  
**Sat., Feb. 23 • Big League Dreams Park • Cathedral City**

	123	456	7		R	H	E
#5 UCLA	2 0 1	0 1 0	2		6	10	1
#10 Baylor	0 1 0	0 0 0	0		1	4	1

Win - Selden (6-1), Loss - Shortridge (3-1)

HR - DiSalvatore (2)

Time: 1:55, Attendance: 864

G.DiSalvatore: 2-for-2, 3 R, 2 RBI, 1 3B, 1 HR, 1 BB

A.Selden: 7 IP, 4 H, 1 ER, 0 BB, 7 K

A.Kamekona: 3-for-4, 1 R, 1 2B

**Game 14 #5 UCLA 3, #14 Hawai'i 0**  
**Sat., Feb. 23 • Big League Dreams Park • Cathedral City**

	123	456	7		R	H	E
#5 UCLA	1 1 0	0 1 0	0		3	10	0
#14 Hawai'i	0 0 0	0 0 0	0		0	1	0

Win - Kerr (5-1), Loss - Robinson (3-2)

HR - Kamekona (3), J.Schroeder (1)

Time: 1:45, Attendance: 327

D.Kerr: 7 IP, 1 H, 0 ER, 0 BB, 8 K

G.DiSalvatore: 3-for-4, 1 R, 1 2B

J.Burney: 2-for-2, 1 BB

**Game 15 #5 UCLA 6, #2 Northwestern 2**  
**Sun., Feb. 24 • Big League Dreams Park • Cathedral City**

	123	456	7		R	H	E
#2 Northwestern	0 0 0	2 0 0	0		2	4	2
#5 UCLA	0 0 0	5 1 0	X		6	6	1

Win - Selden (7-1), Loss - Delaney (6-2)

HR - Kamekona (4), Burney (1)

Time: 1:57, Attendance: 1092

A.Selden: 7 IP, 4 H, 1 ER, 0 BB, 17 K

A.Kamekona: 1-for-3, 1 R, 2 RBI, 1 HR, 1 SAC

J.Burney: 1-for-3, 1 R, 2 RBI, 1 HR

**Game 16 #4 UCLA 3, Cal State Bakersfield 0**  
**Wed., Feb. 27 • Easton Stadium • Los Angeles**

	123	456	7		R	H	E
CS Bakersfield	0 0 0	0 0 0	0		0	2	2
#4 UCLA	2 0 0	0 0 1	X		3	10	1

Win - Kerr (6-1), Loss - Johnson (5-3), Save - Langenfeld (1)

Time: 1:35, Attendance: 183

S.Camuso: 3-for-3

M.Langenfeld: 2-for-3, 3 IP, 1 H, 0 ER, 0 BB, 1 K

D.Kerr: 4 IP, 1 H, 0 ER, 2 BB, 3 K

**Game 17 #4 UCLA 8, James Madison 0 (5 innings)**  
**Fri., Feb. 29 • USD Softball Complex • San Diego**

	123	45		R	H	E
James Madison	0 0 0	0 0		0	1	5
#4 UCLA	2 0 1	5 X		8	9	0

Win - Selden (8-1), Loss - Clohan (2-1)

Time: 1:23, Attendance: 197

A.Selden: 5 IP, 1 H, 0 ER, 0 BB, 14 K

K.Colburn: 3-for-3, 2 R, 1 RBI

A.Kamekona: 2-for-3, 2 R, 2 RBI

**Game 18 #4 UCLA 10, San Diego 0 (6 innings)**  
**Fri., Feb. 29 • USD Softball Complex • San Diego**

	123	456		R	H	E
#4 UCLA	0 0 0	2 2 6		10	14	0
San Diego	0 0 0	0 0 0		0	1	1

Win - Kerr (7-1), Loss - Ellenbeck (1-6)

HR - Shull (2)

Time: 2:03, Attendance: 168

D.Kerr: 6 IP, 1 H, 0 ER, 0 BB, 11 K

G.DiSalvatore: 2-for-4, 1 R, 3 RBI, 1 2B

K.Shull: 2-for-3, 2 R, 2 RBI, 1 HR

**2008 GAME-BY-GAME BOX SCORES****Game 19 #4 UCLA 8, Eastern Michigan 0 (6 inn.)  
Sat., March 1 • SDSU Softball Stadium • San Diego**

	123	456		R	H	E
Eastern Michigan	0 0 0	0 0 0		0	1	2
#4 UCLA	1 1 1	4 0 1		8	9	0

Win - Langenfeld (2-0), Loss - Caro (3-5)

Time: 1:35, Attendance: 106

M.Langenfeld: 6 IP, 1 H, 6 K, 3-for-3, 1 R, 3 RBI, 1 2B

K.Colburn: 2-for-3, 1 R, 2 RBI, 1 2B

S.Camuso: 2-for-3, 3 RBI

**Game 20 #4 UCLA 2, #20 San Diego St. 1 (9 inn.)  
Sat., March 1 • SDSU Softball Stadium • San Diego**

	123	456	789	R	H	E
#4 UCLA	0 0 0	0 0 1	0 0 1	2	5	1
#20 San Diego St.	0 0 0	0 0 1	0 0 0	1	4	2

Win - Selden (9-1), Loss - Ross (8-4)

Time: 2:07, Attendance: 967

A.Selden: 9 IP, 4 H, 0 ER, 0 BB, 13 K

M.Harrison: 2-for-3, 1 R

K.Colburn: 1-for-4, 1 2B, GW Run

**Game 21 #4 UCLA 10, Saint Peter's 0 (5 innings)  
Sun., March 2 • USD Softball Complex • San Diego**

	123	45		R	H	E
Saint Peter's	0 0 0	0 0		0	0	2
#4 UCLA	2 4 4	0 X		10	11	0

Win - Kerr (8-1), Loss - Phillips (0-3)

Time: 0:58, Attendance: 137

D.Kerr: Perfect Game, 5 IP, 0 H, 0 ER, 0 BB, 7 K

A.Kamekona: 2-for-2, 1 R, 3 RBI

K.Colburn: 2-for-3, 1 R, 2 RBI

**Game 22 #2 UCLA 1, UNLV 0  
Wed., March 5 • Easton Stadium • Los Angeles**

	123	456	7	R	H	E
UNLV	0 0 0	0 0 0	0	0	1	1
#2 UCLA	0 0 0	0 1 0	X	1	4	0

Win - Selden (10-1), Loss - Bregante (6-6)

Time: 1:33, Attendance: 178

A.Selden: 7 IP, 1 H, 0 ER, 0 BB, 13 K

J.Burney: 1-for-2, GW RBI

S.Camuso: 1-for-2, GW Run

**Game 23 #2 UCLA 1, #24 Virginia Tech 0  
Fri., March 7 • Mayfair Park • Lakewood**

	123	456	7	R	H	E
#24 Virginia Tech	0 0 0	0 0 0	0	0	1	2
#2 UCLA	0 0 1	0 0 0	X	1	3	0

Win - Selden (11-1), Loss - Tincher (6-3)

Time: 1:44, Attendance: 300

A.Selden: 7 IP, 1 H, 0 ER, 1 BB, 7 K

K.Colburn: 2-for-3, GW RBI

K.Schroeder: 0-for-2, GW Run, 1 BB

**Game 24 #2 UCLA 3, Notre Dame 2  
Fri., March 7 • Mayfair Park • Lakewood**

	123	456	7	R	H	E
#2 UCLA	2 0 0	0 0 0	1	3	8	1
Notre Dame	0 0 1	0 0 1	0	2	4	2

Win - Langenfeld (3-0), Loss - Valdivia (1-3)

HR - Ellis (ND)

Time: 2:08, Attendance: 342

G.DiSalvatore: 3-for-4, 3 RBI, 2 2B, GW RBI

K.Colburn: 1-for-3, 2 R, 1 BB, GW Run

M.Langenfeld: 1.2 IP, 0 H, 0 ER, 0 BB, 1 K

**Game 25 #2 UCLA 9, Rutgers 0  
Sat., March 8 • Mayfair Park • Lakewood**

	123	456	7	R	H	E
#2 UCLA	4 1 0	0 0 0	4	9	14	0
Rutgers	0 0 0	0 0 0	0	0	3	2

Win - Langenfeld (4-0), Loss - Yard (1-4)

Time: 2:06, Attendance: 447

K.Schroeder: 4-for-5, 1 2B

M.Langenfeld: 5 IP, 2 H, 0 ER, 0 BB, 7 K, 1-for-3, 1 RBI, 1 2B

S.Camuso: 2-for-4, 2 R, 2 RBI, 1 2B, 1 3B

**Game 26 #2 UCLA 2, #8 Northwestern 0  
Sun., March 9 • Mayfair Park • Lakewood**

	123	456	7	R	H	E
#8 Northwestern	0 0 0	0 0 0	0	0	2	0
#2 UCLA	0 0 0	2 0 0	X	2	5	1

Win - Kerr (9-1), Loss - Delaney (10-4)

HR: Langenfeld (3)

Time: 1:52, Attendance: 711

D.Kerr: 7 IP, 2 H, 0 ER, 0 BB, 15 K

M.Langenfeld: 1-for-3, 1 R, 2 RBI, GW HR

G.DiSalvatore: 1-for-3, 1 R

**Game 27 #2 UCLA 1, Long Beach State 0 (8 inn.)  
Sun., March 9 • Mayfair Park • Lakewood**

	123	456	78	R	H	E
Long Beach St.	0 0 0	0 0 0	0 0	0	6	0
#2 UCLA	0 0 0	0 0 0	0 1	1	7	0

Win - Selden (12-1), Loss - Turner (10-3)

Time: 2:15, Attendance: 711

A.Selden: 8 IP, 6 H, 0 ER, 2 BB, 11 K

K.Schroeder: 3-for-4

S.Camuso: 1-for-3, 1 2B, GW RBI

**Game 28 Cal State Fullerton 1, #2 UCLA 0 (8 inn.)  
Wed., March 12 • Easton Stadium • Los Angeles**

	123	456	78	R	H	E
CS Fullerton	0 0 0	0 0 0	0 1	1	2	0
#2 UCLA	0 0 0	0 0 0	0 0	0	4	0

Win - Doucette (7-4), Loss - Selden (12-2)

Time: 2:01, Attendance: 177

A.Selden: 8 IP, 2 H, 0 ER, 1 BB, 9 K

K.Schroeder: 1-for-2, 1 BB, 2 SB, 1 SAC

M.Harrison: 1-for-3, 1 2B

**Game 29 #2 UCLA 7, Cal State Northridge 0  
Thu., March 13 • Easton Stadium • Los Angeles**

	123	456	7	R	H	E
CS Northridge	0 0 0	0 0 0	0	0	1	1
#2 UCLA	3 0 3	1 0 0	X	7	11	0

Win - Kerr (10-1), Loss - Lovato (8-9)

HR - Kamekona 2 (6), Langenfeld (4)

Time: 2:10, Attendance: 144

A.Kamekona: 2-for-4, 2 R, 2 RBI, 2 HR

D.Kerr: 5 IP, 1 H, 0 ER, 2 BB, 11 K

M.Harrison: 3-for-3, 1 R, 1 RBI

**Game 30 #1 UCLA 7, UC Santa Barbara 2  
Tue., March 25 • Campus Diamond • Santa Barbara**

	123	456	7	R	H	E
#2 UCLA	0 0 0	0 3 4	0	7	12	2
UC Santa Barbara	0 0 0	0 0 2	0	2	5	0

Win - Selden (13-2), Loss - Correa (7-4)

HR - Duran (UCSB)

Time: 2:37, Attendance: 211

A.Kamekona: 3-for-4, 2 R, 2 RBI, 1 2B

K.Schroeder: 3-for-4, 2 R, 1 SB

A.Selden: 5 IP, 5 H, 2 ER, 1 BB, 12 K

**Game 31 #1 UCLA 8, UC Santa Barbara 1  
Tue., March 25 • Campus Diamond • Santa Barbara**

	123	456	7	R	H	E
#2 UCLA	1 0 0	0 4 3	0	8	13	2
UC Santa Barbara	0 0 0	0 0 1	0	1	3	2

Win - Kerr (11-1), Loss - Weston (4-2)

Time: 2:26, Attendance: 211

M.Langenfeld: 3-for-3, 1 R, 2 RBI, 1 BB, 1 2B

K.Schroeder: 3-for-5, 1 R, 1 RBI, 1 2B

D.Kerr: 7 IP, 3 H, 0 ER, 0 BB, 10 K

**Game 32 #1 UCLA 3, Oregon State 0  
Fri., March 28 • Easton Stadium • Los Angeles**

	123	456	7	R	H	E
Oregon State	0 0 0	0 0 0	0	0	2	0
#1 UCLA	0 0 2	0 0 1	X	3	8	0

W - Selden (14-2), L - Dyer (12-10), S - Langenfeld (2)

Time: 1:38, Attendance: 325

A.Selden: 6 IP, 1 H, 0 ER, 0 BB, 8 K

M.Langenfeld: 1-for-3, 2 RBI, 1 IP, 1 H, 0 ER

K.Colburn: 2-for-3, 1 R, 1 2B

**Game 33 #1 UCLA 2, Oregon 0  
Sat., March 29 • Easton Stadium • Los Angeles**

	123	456	7	R	H	E
Oregon	0 0 0	0 0 0	0	0	4	1
#1 UCLA	2 0 0	0 0 0	X	2	2	0

W - Kerr (12-1), L - Rice (11-5), S - Langenfeld (3)

Time: 1:48, Attendance: 773

D.Kerr: 6 IP, 3 H, 0 ER, 1 BB, 9 K

G.DiSalvatore: 1-for-3, GW RBI

A.Kamekona: 1-for-3, 1 R, 1 2B

**Game 34 #1 UCLA 12, Oregon 0 (5 innings)  
Sun., March 30 • Easton Stadium • Los Angeles**

	123	45		R	H	E
Oregon	0 0 0	0 0		0	6	2
#1 UCLA	5 5 2	0 X		12	9	0

Win - Selden (15-2), Loss - Cook (10-8)

Time: 2:04, Attendance: 1205

J.Burney: 2-for-3, 3 RBI

M.Harrison: 1-for-3, 2 R, 3 RBI, 1 SB

K.Colburn: 2-for-3, 3 R, 1 SB

**Game 35 #1 UCLA 7, #24 Washington 6 (8 inn.)  
Wed., April 2 • Easton Stadium • Los Angeles**

	123	456	78	R	H	E
#24 Washington	1 0 0	0 5 0	0 0	6	6	1
#1 UCLA	0 0 0	6 0 0	0 1	7	6	1

Win - Selden (16-2), Loss - Noble (11-6)

Time: 2:50, Attendance: 216

A.Selden: 3 IP, 1 H, 0 ER, 0 BB, 7 K

S.Camuso: 2-for-4, 1 R, 2 RBI

K.Shull: 1-for-3, 2 RBI

**Game 36 #1 UCLA 3, #7 Stanford 1  
Fri., April 4 • Easton Stadium • Los Angeles**

	123	456	7	R	H	E
#7 Stanford	1 0 0	0 0 0	0	1	4	3
#1 UCLA	0 1 2	0 0 0	X	3	4	1

Win - Langenfeld (5-0), Loss - Penna (22-5)

HR - Haber (STAN)

Time: 2:20, Attendance: 324

M.Langenfeld: 3.2 IP, 0 H, 0 ER, 2 BB, 4 K

A.Kamekona: 1-for-3, 1 2B, GW RBI

G.DiSalvatore: 1-for-2, 1 R, 1 RBI



**2008 GAME-BY-GAME BOX SCORES****Game 37 #1 UCLA 2, #21 California 1**  
**Sat., April 5 • Easton Stadium • Los Angeles**

	1	2	3	4	5	6	7	R	H	E
#21 California	0	0	0	0	0	0	1	1	1	0
#1 UCLA	0	2	0	0	0	X		2	7	0

W - Kerr (13-1), L - Arioto (6-3), S - Langenfeld (4)

Time: 2:04, Attendance: 632

D.Kerr: 6 IP, 0 H, 0 ER, 2 BB, 4 K

M.Harrison: 2-for-3, 1 R

A.Kamekona: 0-for-1, 2 BB, GW RBI

**Game 38 #1 UCLA 5, #21 California 0**  
**Sun., April 6 • Easton Stadium • Los Angeles**

	1	2	3	4	5	6	7	R	H	E
#21 California	0	0	0	0	0	0	0	0	5	1
#1 UCLA	0	0	3	0	0	2	X	5	11	1

Win - Selden (17-2), Loss - Drewrey (20-9)

HR - Kamekona (7)

Time: 2:11, Attendance: 1117

A.Kamekona: 2-for-4, 1 R, 3 RBI, 1 HR, 1 SB

A.Selden: 7 IP, 5 H, 0 ER, 0 BB, 13 K

K.Schroeder: 3-for-4, 1 R, 1 2B

**Game 39 #1 Arizona State 3, #1 UCLA 0**  
**Fri., April 11 • Farrington Stadium • Tempe**

	1	2	3	4	5	6	7	R	H	E
#1 UCLA	0	0	0	0	0	0	0	0	3	0
#1 Arizona State	1	0	0	1	0	1	X	3	4	0

Win - Burkhart (24-2), Loss - Selden (17-3)

Time: 1:46, Attendance: 1969

K.Colburn: 1-for-3, 1 1B

A.Kamekona/K.Schroeder: 1-for-3, 1 1B

A.Selden: 6 IP, 4 H, 3 ER, 1 BB, 5 K

**Game 40 #7 Arizona 8, #1 UCLA 0 (6 innings)**  
**Sat., April 12 • Hillenbrand Stadium • Tucson**

	1	2	3	4	5	6	7	R	H	E
#1 UCLA	0	0	0	0	0	0	0	0	6	1
#7 Arizona	0	0	5	0	0	3		8	7	0

Win - Akamine (2-0), Loss - Kerr (13-2)

Time: 2:00, Attendance: 2318

A.Kamekona: 1-for-3, 1 2B

S.Camuso: 1-for-3, 1 2B

J.Schroeder: 1-for-3, 1 2B

**Game 41 #1 UCLA 2, #7 Arizona 1**  
**Sun., April 13 • Hillenbrand Stadium • Tucson**

	1	2	3	4	5	6	7	R	H	E
#1 UCLA	1	0	0	0	0	0	1	2	5	0
#7 Arizona	0	0	0	0	0	1	0	1	5	1

Win - Selden (18-3), Loss - Mowatt (17-9)

HR - J.Schroeder (2)

Time: 2:14, Attendance: 1589

J.Schroeder: 1-for-3, 1 R, 1 RBI, GW HR

A.Selden: 7 IP, 5 H, 1 ER, 2 BB, 8 K

M.Langenfeld: 1-for-2, 1 2B, 1 RBI, 1 BB

**Game 42 #4 UCLA 2, #20 Washington 1**  
**Fri., April 18 • Husky Softball Stadium • Seattle**

	1	2	3	4	5	6	7	R	H	E
#4 UCLA	0	0	1	0	1	0	0	2	10	1
#20 Washington	0	0	0	0	1	0	0	1	3	1

Win - Selden (19-3), Loss - Macon (14-8)

HR - Kamekona (8)

Time: 2:20, Attendance: 336

A.Selden: 7 IP, 3 H, 0 ER, 1 BB, 14 K

K.Colburn: 3-for-4, 3 1B

G.DiSalvatore: 2-for-4, 1 RBI

**Game 43 #4 UCLA 4, #20 Washington 0**  
**Sat., April 19 • Husky Softball Stadium • Seattle**

	1	2	3	4	5	6	7	R	H	E
#4 UCLA	1	0	0	0	0	0	3	4	9	0
#20 Washington	0	0	0	0	0	0	0	0	2	1

W - Langenfeld (6-0), L - Macon (14-9), S - Selden (2)

Time: 2:02, Attendance: 771

M.Langenfeld: 5 IP, 1 H, 0 ER, 1 BB, 5 K, 1-for-3, 2 RBI

K.Colburn: 2-for-4, 2 R, 1 RBI

G.DiSalvatore: 2-for-4, 1 2B

**Game 44 #4 UCLA 7, #21 California 2**  
**Fri., April 25 • Levine-Fricke Field • Berkeley**

	1	2	3	4	5	6	7	R	H	E
#4 UCLA	1	0	0	6	0	0	0	7	9	1
#21 California	0	0	0	0	2	0	0	2	4	1

Win - Langenfeld (7-0), Loss - Drewrey (24-12)

Time: 2:27, Attendance: 222

M.Langenfeld: 3-for-3, 3 RBI, 7 IP, 4 H, 0 ER, 2 BB, 6 K

G.DiSalvatore: 2-for-3, 1 R

K.Colburn: 1-for-4, 1 R, 2 RBI

**Game 45 #4 UCLA 1, #7 Stanford 0**  
**Sat., April 26 • Smith Family Stadium • Stanford**

	1	2	3	4	5	6	7	R	H	E
#4 UCLA	0	0	0	1	0	0	0	1	6	1
#7 Stanford	0	0	0	0	0	0	0	0	5	1

W - Kerr (14-2), L - Penna (30-8), S - Langenfeld (5)

Time: 1:59, Attendance: 698

S.Camuso: 2-for-3, 1 2B, GW RBI

D.Kerr: 4.2 IP, 5 H, 0 ER, 0 BB, 3 K

M.Langenfeld: 2.1 IP, 0 H, 0 ER, 1 BB, 3 K

**Game 46 #4 UCLA 4, #7 Stanford 1**  
**Sun., April 27 • Smith Family Stadium • Stanford**

	1	2	3	4	5	6	7	R	H	E
#4 UCLA	3	0	0	0	0	0	1	4	10	1
#7 Stanford	0	1	0	0	0	0	0	1	3	1

Win - Selden (20-3), Loss - Penna (30-9)

HR - Colburn (1), Langenfeld (5)

Time: 2:10, Attendance: 1288

S.Camuso: 3-for-4, 1 2B

A.Selden: 7 IP, 3 H, 1 ER, 1 BB, 7 K

M.Langenfeld: 1-for-4, 1 R, 3 RBI, 1 HR

**Game 47 #4 UCLA 2, #10 Arizona 1**  
**Fri., May 2 • Easton Stadium • Los Angeles**

	1	2	3	4	5	6	7	R	H	E
#10 Arizona	0	0	0	0	0	0	1	1	2	0
#4 UCLA	0	0	1	0	0	0	1	2	4	0

Win - Selden (21-3), Loss - Mowatt (19-12)

HR - Harrison (1), Banister (ARIZ)

Time: 2:07, Attendance: 575

A.Selden: 7 IP, 2 H, 1 ER, 2 BB, 6 K

M.Harrison: 1-for-3, 1 R, 1 RBI, Walk-Off HR

K.Schroeder: 2-for-3

**Game 48 #4 UCLA 5, #1 Arizona State 0**  
**Sat., May 3 • Easton Stadium • Los Angeles**

	1	2	3	4	5	6	7	R	H	E
#1 Arizona State	0	0	0	0	0	0	0	0	5	1
#4 UCLA	0	1	1	0	3	0	X	5	7	0

Win - Selden (22-3), Loss - Burkhart (30-4)

HR - Kamekona 2 (10), DiSalvatore (3)

Time: 2:07, Attendance: 1065

A.Kamekona: 2-for-3, 2 R, 4 RBI, 2 HR

A.Selden: 7 IP, 5 H, 0 ER, 2 BB, 9 K

G.DiSalvatore: 1-for-3, 1 R, 1 RBI, 1 HR

**Game 49 #1 Arizona State 5, #4 UCLA 2**  
**Sun., May 4 • Easton Stadium • Los Angeles**

	1	2	3	4	5	6	7	R	H	E
#1 Arizona State	3	0	0	2	0	0	0	5	6	0
#4 UCLA	0	0	0	1	1	0	0	2	9	0

W - Elliott (19-0), L - Langenfeld (7-1), S - Burkhart (3)

HR - Kamekona (11), Miller (ASU)

Time: 2:25, Attendance: 1193

A.Kamekona: 3-for-4, 1 R, 1 RBI, 1 HR

S.Camuso: 2-for-2, 2 1B

A.Selden: 3.1 IP, 2 H, 0 ER, 0 BB, 2 K

## UCLA Batting Orders by Game

Game (Date)	1	2	3	4	5	6	7	8	9	Used	Record
NEV (2/8)	K.Schroeder	Herrera	Colburn	Langenfeld	Kamekona	DiSalvatore	Camuso	Shull	Burney	1	1-0
OKL (2/8)	K.Schroeder	Herrera	Colburn	Langenfeld	Kamekona	DiSalvatore	Camuso	J.Schroeder	Burney	1	1-0
SCU (2/9)	K.Schroeder	Herrera	Colburn	Langenfeld	Camuso	DiSalvatore	Kamekona	J.Schroeder	Burney	1	1-0
UCSB (2/9)	K.Schroeder	Herrera	Colburn	Langenfeld	Camuso	DiSalvatore	Kamekona	J.Schroeder	Shull	1	1-0
OKL (2/10)	K.Schroeder	Herrera	Colburn	Langenfeld	Camuso	DiSalvatore	Kamekona	J.Schroeder	Shull	2	1-1
MIZZ (2/15)	Herrera	Kamekona	Colburn	Langenfeld	Camuso	DiSalvatore	J.Schroeder	Burney	Harrison	1	1-0
USC (2/15)	K.Schroeder	Herrera	Colburn	Langenfeld	Camuso	DiSalvatore	Kamekona	Shull	Harrison	1	1-0
ILL (2/16)	K.Schroeder	Herrera	Colburn	Langenfeld	Camuso	DiSalvatore	Kamekona	J.Schroeder	Harrison	1	0-1
PSU (2/16)	K.Schroeder	Kamekona	Colburn	Langenfeld	Camuso	DiSalvatore	Harrison	Burney	Shull	1	1-0
WISC (2/17)	K.Schroeder	Kamekona	Colburn	Langenfeld	DiSalvatore	Camuso	Harrison	Burney	J.Schroeder	1	1-0
MASS (2/22)	K.Schroeder	Kamekona	Colburn	DiSalvatore	Camuso	Harrison	J.Schroeder	Burney	Shull	1	1-0
GA (2/22)	K.Schroeder	Kamekona	Colburn	DiSalvatore	Camuso	Harrison	J.Schroeder	Burney	Shull	2	2-0
BAY (2/23)	K.Schroeder	Kamekona	Colburn	DiSalvatore	Camuso	Harrison	J.Schroeder	Burney	Shull	3	3-0
HAW (2/23)	K.Schroeder	Kamekona	Colburn	DiSalvatore	Camuso	Harrison	J.Schroeder	Burney	Shull	4	4-0
NW (2/24)	K.Schroeder	Kamekona	Colburn	DiSalvatore	Langenfeld	Camuso	J.Schroeder	Burney	Harrison	1	1-0
CSUB (2/27)	K.Schroeder	Kamekona	Colburn	DiSalvatore	Langenfeld	Camuso	J.Schroeder	Burney	Harrison	2	2-0
JMU (2/29)	K.Schroeder	Kamekona	Colburn	DiSalvatore	Langenfeld	Camuso	J.Schroeder	Burney	Harrison	3	3-0
USD (2/29)	K.Schroeder	Kamekona	Colburn	DiSalvatore	Langenfeld	Camuso	Burney	Shull	Harrison	1	1-0
EMU (3/1)	Colburn	Kamekona	DiSalvatore	Langenfeld	Camuso	Harrison	J.Schroeder	Burney	Shull	1	1-0
SDSU (3/1)	K.Schroeder	Kamekona	Colburn	DiSalvatore	Langenfeld	Camuso	J.Schroeder	Burney	Harrison	4	4-0
SPC (3/2)	K.Schroeder	Kamekona	Colburn	DiSalvatore	Langenfeld	Camuso	J.Schroeder	Burney	Harrison	5	5-0
UNLV (3/5)	K.Schroeder	Kamekona	Colburn	DiSalvatore	Langenfeld	Camuso	J.Schroeder	Burney	Harrison	6	6-0
VT (3/7)	K.Schroeder	Kamekona	Colburn	DiSalvatore	Langenfeld	Camuso	J.Schroeder	Burney	Harrison	7	7-0
ND (3/7)	K.Schroeder	Kamekona	Colburn	DiSalvatore	Langenfeld	Camuso	J.Schroeder	Burney	Harrison	8	8-0
RUT (3/8)	K.Schroeder	Kamekona	Colburn	DiSalvatore	Langenfeld	Camuso	Burney	Harrison	Shull	1	1-0
NW (3/9)	K.Schroeder	Kamekona	Colburn	DiSalvatore	Langenfeld	Camuso	J.Schroeder	Burney	Harrison	9	9-0
LBSU (3/9)	K.Schroeder	Kamekona	Colburn	DiSalvatore	Langenfeld	Camuso	Harrison	J.Schroeder	Burney	1	1-0
CSUF (3/12)	K.Schroeder	Kamekona	Colburn	DiSalvatore	Langenfeld	Camuso	Harrison	Burney	J.Schroeder	1	0-1
CSUN (3/13)	K.Schroeder	Kamekona	Langenfeld	DiSalvatore	Camuso	Harrison	J.Schroeder	Burney	Shull	1	1-0
UCSB-1 (3/25)	K.Schroeder	Kamekona	Colburn	DiSalvatore	Langenfeld	Camuso	Harrison	J.Schroeder	Burney	2	2-0
UCSB-2 (3/25)	K.Schroeder	Kamekona	Colburn	DiSalvatore	Langenfeld	Camuso	Harrison	J.Schroeder	Shull	1	1-0
OSU (3/28)	K.Schroeder	Kamekona	Colburn	DiSalvatore	Langenfeld	Camuso	Harrison	Burney	J.Schroeder	2	1-1
ORE (3/29)	K.Schroeder	Kamekona	Colburn	DiSalvatore	Langenfeld	Camuso	Harrison	Burney	J.Schroeder	3	2-1
ORE (3/30)	K.Schroeder	Colburn	Kamekona	DiSalvatore	Langenfeld	Camuso	Harrison	Burney	Shull	1	1-0
WASH (4/2)	K.Schroeder	Colburn	Kamekona	DiSalvatore	Langenfeld	Camuso	Harrison	Burney	Shull	2	2-0
STAN (4/4)	K.Schroeder	Colburn	Kamekona	DiSalvatore	Langenfeld	Camuso	Harrison	Burney	J.Schroeder	1	1-0
CAL (4/5)	K.Schroeder	Colburn	Kamekona	DiSalvatore	Langenfeld	Camuso	Harrison	Burney	J.Schroeder	2	2-0
CAL (4/6)	K.Schroeder	Colburn	Kamekona	DiSalvatore	Langenfeld	Camuso	Harrison	Burney	J.Schroeder	3	3-0
ASU (4/11)	K.Schroeder	Colburn	Kamekona	DiSalvatore	Langenfeld	Camuso	Harrison	Burney	J.Schroeder	4	3-1
ARIZ (4/12)	K.Schroeder	Colburn	Kamekona	DiSalvatore	Langenfeld	Camuso	Harrison	Burney	J.Schroeder	5	3-2
ARIZ (4/13)	K.Schroeder	Colburn	Kamekona	Langenfeld	Camuso	DiSalvatore	Burney	J.Schroeder	Harrison	1	1-0
WASH (4/18)	K.Schroeder	Colburn	Kamekona	Langenfeld	DiSalvatore	Camuso	Harrison	J.Schroeder	Burney	1	1-0
WASH (4/19)	K.Schroeder	Colburn	Kamekona	Langenfeld	DiSalvatore	Camuso	Burney	Harrison	Shull	1	1-0
CAL (4/25)	K.Schroeder	Colburn	Kamekona	Langenfeld	DiSalvatore	Camuso	Burney	J.Schroeder	Harrison	1	1-0
STAN (4/26)	K.Schroeder	Colburn	Kamekona	Langenfeld	DiSalvatore	Camuso	Burney	J.Schroeder	Harrison	2	2-0
STAN (4/27)	K.Schroeder	Colburn	Kamekona	Langenfeld	DiSalvatore	Camuso	Burney	J.Schroeder	Harrison	3	3-0
ARIZ (5/2)	K.Schroeder	Colburn	Kamekona	Langenfeld	DiSalvatore	Camuso	Harrison	J.Schroeder	Herrera	1	1-0
ASU (5/3)	K.Schroeder	Colburn	Kamekona	Langenfeld	DiSalvatore	Camuso	Harrison	J.Schroeder	Herrera	2	2-0
ASU (5/4)	K.Schroeder	Colburn	Kamekona	Langenfeld	DiSalvatore	Harrison	Camuso	J.Schroeder	Herrera	1	0-1

## UCLA Position Starters by Game

Game (Date)	P	C	1B	2B	SS	3B	LF	CF	RF	DP	Used	Record
NEV (2/8)	Langenfeld	Shull	Herrera	DiSalvatore	Kamekona	Burney	Colburn	K.Schroeder	Camuso	-	1	1-0
OKL (2/8)	Kerr	J.Schroeder	Langenfeld	DiSalvatore	Kamekona	Herrera	Colburn	K.Schroeder	Camuso	Burney	1	1-0
SCU (2/9)	Selden	J.Schroeder	Langenfeld	DiSalvatore	Kamekona	Herrera	Colburn	K.Schroeder	Camuso	Burney	1	1-0
UCSB (2/9)	Kerr	Shull	Langenfeld	DiSalvatore	Kamekona	Herrera	Colburn	K.Schroeder	Camuso	J.Schroeder	1	1-0
OKL (2/10)	Selden	J.Schroeder	Langenfeld	DiSalvatore	Kamekona	Herrera	Colburn	K.Schroeder	Camuso	Shull	1	0-1
MIZZ (2/15)	Kerr	J.Schroeder	Langenfeld	Kamekona	Harrison	Burney	Colburn	Herrera	Camuso	DiSalvatore	1	1-0
USC (2/15)	Selden	Shull	Langenfeld	Kamekona	Harrison	Herrera	Colburn	K.Schroeder	Camuso	DiSalvatore	1	1-0
ILL (2/16)	Kerr	J.Schroeder	DiSalvatore	Kamekona	Harrison	Herrera	Colburn	K.Schroeder	Camuso	Langenfeld	1	0-1
PSU (2/16)	Selden	Shull	Langenfeld	Kamekona	Harrison	Burney	Colburn	K.Schroeder	Camuso	DiSalvatore	1	1-0
WISC (2/17)	Selden	J.Schroeder	DiSalvatore	Kamekona	Harrison	Burney	Colburn	K.Schroeder	Camuso	Langenfeld	1	1-0
MASS (2/22)	Kerr	Shull	DiSalvatore	Kamekona	Harrison	Burney	Colburn	K.Schroeder	Camuso	J.Schroeder	1	1-0
GA (2/22)	Selden	J.Schroeder	DiSalvatore	Kamekona	Harrison	Burney	Colburn	K.Schroeder	Camuso	Shull	1	1-0
BAY (2/23)	Selden	J.Schroeder	DiSalvatore	Kamekona	Harrison	Burney	Colburn	K.Schroeder	Camuso	Shull	2	2-0
HAW (2/23)	Kerr	J.Schroeder	DiSalvatore	Kamekona	Harrison	Burney	Colburn	K.Schroeder	Camuso	Shull	1	1-0
NW (2/24)	Selden	J.Schroeder	DiSalvatore	Kamekona	Harrison	Burney	Colburn	K.Schroeder	Camuso	Langenfeld	2	2-0
CSUB (2/27)	Kerr	J.Schroeder	DiSalvatore	Kamekona	Harrison	Burney	Colburn	K.Schroeder	Camuso	Langenfeld	1	1-0
JMU (2/29)	Selden	J.Schroeder	DiSalvatore	Kamekona	Harrison	Burney	Colburn	K.Schroeder	Camuso	Langenfeld	3	3-0
USD (2/29)	Kerr	Shull	Langenfeld	Kamekona	Harrison	Burney	Colburn	K.Schroeder	Camuso	DiSalvatore	1	1-0
EMU (3/1)	Langenfeld	Shull	DiSalvatore	Kamekona	Harrison	Burney	Crawford	Colburn	Camuso	J.Schroeder	1	1-0
SDSU (3/1)	Selden	J.Schroeder	DiSalvatore	Kamekona	Harrison	Burney	Colburn	K.Schroeder	Camuso	Langenfeld	4	4-0
SPC (3/2)	Kerr	J.Schroeder	Langenfeld	Kamekona	Harrison	Burney	Colburn	K.Schroeder	Camuso	DiSalvatore	1	1-0
UNLV (3/5)	Selden	J.Schroeder	Langenfeld	Kamekona	Harrison	Burney	Colburn	K.Schroeder	Camuso	DiSalvatore	1	1-0
VT (3/7)	Selden	J.Schroeder	Langenfeld	Kamekona	Harrison	Burney	Colburn	K.Schroeder	Camuso	DiSalvatore	2	2-0
ND (3/7)	Kerr	J.Schroeder	DiSalvatore	Kamekona	Harrison	Burney	Colburn	K.Schroeder	Camuso	Langenfeld	2	2-0
RUT (3/8)	Langenfeld	Shull	DiSalvatore	Kamekona	Harrison	Burney	Colburn	K.Schroeder	Camuso	-	1	1-0
NW (3/9)	Kerr	J.Schroeder	DiSalvatore	Kamekona	Harrison	Burney	Colburn	K.Schroeder	Camuso	Langenfeld	3	3-0
LBSU (3/9)	Selden	J.Schroeder	DiSalvatore	Kamekona	Harrison	Burney	Colburn	K.Schroeder	Camuso	Langenfeld	5	5-0
CSUF (3/12)	Selden	J.Schroeder	DiSalvatore	Kamekona	Harrison	Burney	Colburn	K.Schroeder	Camuso	Langenfeld	6	5-1
CSUN (3/13)	Kerr	J.Schroeder	DiSalvatore	Kamekona	Harrison	Burney	Camuso	K.Schroeder	Shull	Langenfeld	1	1-0
UCSB-1 (3/25)	Selden	J.Schroeder	DiSalvatore	Kamekona	Harrison	Burney	Colburn	K.Schroeder	Camuso	Langenfeld	7	6-1
UCSB-2 (3/25)	Kerr	Shull	Langenfeld	Kamekona	Harrison	DiSalvatore	Colburn	K.Schroeder	Camuso	J.Schroeder	1	1-0
OSU (3/28)	Selden	J.Schroeder	DiSalvatore	Kamekona	Harrison	Burney	Colburn	K.Schroeder	Camuso	Langenfeld	8	7-1
ORE (3/29)	Kerr	J.Schroeder	DiSalvatore	Kamekona	Harrison	Burney	Colburn	K.Schroeder	Camuso	Langenfeld	4	4-0
ORE (3/30)	Selden	Shull	DiSalvatore	Kamekona	Harrison	Burney	Colburn	K.Schroeder	Camuso	Langenfeld	1	1-0
WASH (4/2)	Kerr	Shull	Langenfeld	Kamekona	Harrison	Burney	Colburn	K.Schroeder	Camuso	DiSalvatore	2	2-0
STAN (4/4)	Selden	J.Schroeder	DiSalvatore	Kamekona	Harrison	Burney	Colburn	K.Schroeder	Camuso	Langenfeld	9	8-1
CAL (4/5)	Kerr	J.Schroeder	DiSalvatore	Kamekona	Harrison	Burney	Colburn	K.Schroeder	Camuso	Langenfeld	5	5-0
CAL (4/6)	Selden	J.Schroeder	DiSalvatore	Kamekona	Harrison	Burney	Colburn	K.Schroeder	Camuso	Langenfeld	10	9-1
ASU (4/11)	Selden	J.Schroeder	DiSalvatore	Kamekona	Harrison	Burney	Colburn	K.Schroeder	Camuso	Langenfeld	11	9-2
ARIZ (4/12)	Kerr	J.Schroeder	DiSalvatore	Kamekona	Harrison	Burney	Colburn	K.Schroeder	Camuso	Langenfeld	6	5-1
ARIZ (4/13)	Selden	J.Schroeder	DiSalvatore	Kamekona	Harrison	Burney	Colburn	K.Schroeder	Camuso	Langenfeld	12	10-2
WASH (4/18)	Selden	J.Schroeder	DiSalvatore	Kamekona	Harrison	Burney	Colburn	K.Schroeder	Camuso	Langenfeld	13	11-2
WASH (4/19)	Langenfeld	Shull	DiSalvatore	Kamekona	Harrison	Burney	Colburn	K.Schroeder	Camuso	-	2	2-0
CAL (4/25)	Langenfeld	J.Schroeder	DiSalvatore	Kamekona	Harrison	Burney	Colburn	K.Schroeder	Camuso	-	1	1-0
STAN (4/26)	Kerr	J.Schroeder	DiSalvatore	Kamekona	Harrison	Burney	Colburn	K.Schroeder	Camuso	Langenfeld	7	6-1
STAN (4/27)	Selden	J.Schroeder	DiSalvatore	Kamekona	Harrison	Burney	Colburn	K.Schroeder	Camuso	Langenfeld	14	12-2
ARIZ (5/2)	Selden	J.Schroeder	DiSalvatore	Kamekona	Harrison	Herrera	Colburn	K.Schroeder	Camuso	Langenfeld	1	1-0
ASU (5/3)	Selden	J.Schroeder	DiSalvatore	Kamekona	Harrison	Herrera	Colburn	K.Schroeder	Camuso	Langenfeld	2	2-0
ASU (5/4)	Langenfeld	J.Schroeder	DiSalvatore	Kamekona	Harrison	Herrera	Colburn	K.Schroeder	Camuso	-	1	0-1





**KELLY INOUE-PEREZ**  
**2ND YEAR AS HEAD COACH**  
**15TH YEAR AT UCLA**  
**UCLA, 1993**  
**CAREER RECORD: 80-24**

Kelly Inouye-Perez begins her second season as the head coach of the UCLA softball program. Inouye-Perez guided the Bruins to a 37-18 record in her first season and a tie for third in the Pac-10.

Inouye-Perez coached two players, Krista Colburn and Lisa Dodd, to All-American honors. Four Bruins made the All-Pacific Region Team and nine received All-Pac-10 nods.

Inouye-Perez, just the third head coach in UCLA softball history, officially took over the reigns from Sue Enquist on Jan. 1, 2007. Enquist announced her retirement as head coach on Sept. 26, 2006.

No stranger to the Bruin dugout, Inouye-Perez starts her 20th-straight season in Westwood in 2008. She is a link to three decades of Bruin softball success, joining the UCLA softball program as a freshman in 1989. Inouye-

Perez's apprenticeship is highlighted by six NCAA Championships and seven Pac-10 titles in her previous 19 years, spending five campaigns as a player and 13 as an assistant coach.

Over Inouye-Perez's 13 seasons (1994-2006) as assistant coach for the Bruins, UCLA is 617-150-1 (.804) and has appeared in the NCAA title game seven times, winning the NCAA Championship in the 1999, 2003 and 2004 seasons. The Bruins also won three Pac-10 titles during that span (1999, 2002, 2006) and in 2004 were named the National Coaching Staff of the Year by the National Fastpitch Coaches Association (NFCA).

Inouye-Perez's primary responsibility as an assistant coach was guiding the Bruin pitchers and catchers, a list which includes many of the most honored and recognizable names in collegiate softball. Behind the dish, where Inouye-Perez also starred as a three-time All-Pac-10 honoree during her playing days at UCLA, she helped mold and influence arguably the best catcher in the history of USA Softball in Stacey Nuveman. Under Inouye-Perez's tutelage, Nuveman became a three-time Pac-10 Player of the Year, four-time, first-team All-American and the NCAA's all-time single season and career home run leader.

Since the Pac-10 Conference began issuing a Pitcher of the Year Award, UCLA has been honored with two winners, Courtney Dale in 1999 and Keira Goerl in

2003. Among the other pitching highlights accomplished by the Bruins over her 13 years as assistant coach include at least one All-American Award earned by a UCLA pitcher in 12 of those campaigns, including DeeDee Weiman, three-time Olympian Tanya Harding and two-time Olympian Amanda Freed.

In addition, nearly every UCLA pitching record has been set during the time Inouye-Perez has overseen the Bruin battery and the top three pitchers on UCLA's career wins list, Goerl, Freed and B'Ann Burns, were coached by her.

Inouye-Perez was an exceptionally strong fielder behind the dish for the Bruins. She made her mark immediately as a collegiate player, earning first-team All-Pac-10 as a true freshman and second-team as a sophomore, leading the Bruins to the 1989 and 1990 NCAA Championships before receiving a medical redshirt in 1991 due to shoulder surgery.

She came back strong in 1992, picking up second-team All-Pac-10 as the Bruins once again won the national championship and finished with a 54-2 record, the fewest losses in a season in program history. Inouye-Perez also was named to the 1992 All-Women's College World Series Team, going 5-for-12 (.417) with four RBI during WCWS play. She wrapped up her career as a fifth-year senior in 1993 with an NCAA runner-up finish. Impressively, Inouye-Perez did not commit a single fielding error during her final two seasons. Among the UCLA pitchers during her five seasons as a player were Lisa Longaker and Lisa Fernandez, both of whom were named to the NCAA's 25th Anniversary All-WCWS Team.

During her UCLA career, Inouye-Perez played in 22 Women's College World Series games, a mark that is tied for second-best in UCLA history behind only Lisa Fernandez and Kristy Howard (23).

Prior to college, Inouye-Perez was one of the top ASA players, winning four national titles, with the Panthers (1984, '85 and '89) and the Raiders (1986). She also competed on an international level in Japan in 1985 and Peru in 1987 (Pan American Tournament) and followed her collegiate career with time playing on the NPF Pro Tour.

Inouye-Perez and her husband, Gerardo Perez, currently reside in Cerritos. Along with Kelly's exploits on the diamond, Gerardo competed as a catcher/DH for Cerritos College from 1988-90 and helped lead the Falcons to the 1989 Junior College National Championship. After a stellar career at Cerritos, he went on to compete at Loyola Marymount, earning first-team All-West Coast Conference honors his junior and senior seasons. He currently teaches health and coaches baseball at Gahr High School in Cerritos. The couple have two children, Michael (8) and Kylie (3).

Inouye-Perez earned her B.A. in psychology from UCLA in 1993 and her master's degree in physical education from Azusa Pacific in 2004.

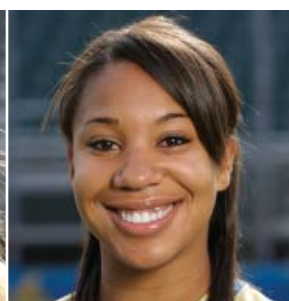


UCLA COACHING STAFF (L TO R): NATASHA WATLEY, GINA VECCHIONE, KELLY INOUE-PEREZ, LISA FERNANDEZ





**#3 GiOnna DiSalvatore**  
INF • 5-9 • L/R • FR  
PALM HARBOR, FL  
COUNTRYSIDE HS



**#4 ANJELICA SELDEN**  
P • 5-9½ • R/R • SR  
VACAVILLE, CA  
VANDEN HS



**#5 DONNA KERR**  
P • 5-7 • R/R • FR  
SAN DIEGO, CA  
PATRICK HENRY HS



**#7 SAMANTHA CAMUSO**  
OF • 5-7 • L/R • FR  
REDDING, CA  
FOOTHILL HS



**#9 KAILA SHULL**  
C/OF • 5-8 • L/R • SO  
LODI, CA  
JIM ELLIOT CHRISTIAN HS



**#10 LAUREN MIRABAL**  
UTIL • 5-6 • L/R • FR  
SAN DIMAS, CA  
BISHOP AMAT HS



**#11 ASHLEY HERRERA**  
INF • 5-6 • L/R • SR  
CANYON COUNTRY, CA  
VALENCIA HS



**#13 KRISTA COLBURN**  
OF • 5-10 • R/R • SR  
MUKILTEO, WA  
KAMIAK HS



**#14 JULIE BURNEY**  
INF • 5-5 • R/R • SO  
PLACENTIA, CA  
EL DORADO HS



**#18 MONICA HARRISON**  
INF • 5-4 • R/R • FR  
GARDEN GROVE, CA  
PACIFICA HS



**#20 WHITNEY BAKER**  
P • 5-10 • R/R • SO  
VANCOUVER, WA  
SKYVIEW HS



**#21 GRACE MURRAY**  
OF • 5-4 • R/R • FR  
LAKEWOOD, CA  
GAHR HS



**#23 AMY CRAWFORD**  
OF • 5-9 • R/R • FR  
PLEASANTON, CA  
FOOTHILL HS



**#27 JENNIFER SCHROEDER**  
C • 6-0 • R/R • JR  
YORBA LINDA, CA  
ESPERANZA HS



**#29 KATIE SCHROEDER**  
OF • 5-10 • L/R • FR  
YORBA LINDA, CA  
ESPERANZA HS



**#31 MEGAN LANGENFELD**  
P/1B • 5-6 • L/R • SO  
BAKERSFIELD, CA  
CENTENNIAL HS



**#44 DANIELLE PETERSON**  
UTIL • 5-7 • R/R • SR  
SAN JOSE, CA  
ARCHBISHOP MITTY HS



**#47 AMANDA KAMEKONA**  
INF • 5-2 • R/R • JR  
CHINO HILLS, CA  
AYALA HS/CS FULLERTON



**HEAD COACH**  
KELLY INOUE-PEREZ  
2ND YEAR AS HEAD COACH  
15TH YEAR AT UCLA

**#3 GiOnna DiSalvatore • Infielder • 5-9 • Bats: Left • Throws: Right • Freshman • Palm Harbor, FL • Countryside HS****Awards: 2008 (Freshman)** - Two-Time Pacific-10 Conference Player of the Week (Feb. 12 & Feb. 26)**SEASON AND CAREER HIGHS**

<b>At-Bats:</b> 5, vs. Santa Clara (2/9)	<b>Doubles:</b> 2, vs. Notre Dame (3/7)	<b>Total Bases:</b> 7, vs. UCSB (2/9) & vs. Baylor (2/23)
<b>Runs:</b> 3, vs. Santa Clara (2/9) & vs. Baylor (2/23)	<b>Home Runs:</b> 1, 3 Times (last vs. Arizona State, 5/3)	<b>Walks:</b> 2, vs. Northwestern (2/24)
<b>Hits:</b> 3, 5 Times (last vs. Notre Dame, 3/7)	<b>RBI:</b> 4, 3 Times (last vs. Portland State, 2/16)	<b>Stolen Bases:</b> 1, vs. Eastern Michigan (3/1)

**CAREER STATISTICS**

YEAR	AVG	GP-GS	AB	R	H	2B	3B	HR	RBI	TB	SLG%	BB	HBP	SO	GDP	OB%	SF	SH	SB-ATT
2008	.373	49-49	153	27	57	13	2	3	39	83	.542	14	2	20	1	.432	0	2	1-1

**#4 Anjelica Selden • Pitcher • 5-9½ • Bats: Right • Throws: Right • Senior • Vacaville, CA • Vanden HS****Awards: 2008 (Senior)** - NFCA and USA Softball National Player of the Week (Feb. 26), Three-Time Pacific-10 Conference Pitcher of the Week (Feb. 26, March 11 and April 1), Top 25 Finalist for USA Softball Player of the Year Award, Top 10 Finalist for Lowe's Senior CLASS Award**2007 (Junior)** - NFCA Second-Team All-Pacific Region, Honorable Mention All-Pac-10.**2006 (Sophomore)** - NFCA and Easton First-Team All-American, NFCA First-Team All-Pacific Region, First Team All-Pac-10, Three-Time Pac-10 Pitcher of the Week.**2005 (Freshman)** - NFCA Second-Team All-American and All-Pacific Region, First-Team Easton All-American, First Team All-Pac-10, Pac-10 Newcomer of the Year, College World Series All-Tournament Team, NFCA and USA Softball National Player of the Week, Four-Time Pac-10 Pitcher of the Week.**SEASON HIGHS**

<b>Innings Pitched:</b> 9.0, at San Diego State (3/1)	<b>Strikeouts:</b> 17, vs. Northwestern (2/24)
---	--

**CAREER HIGHS**

<b>Innings Pitched:</b> 13.2, vs. Mississippi (3/4/05)	<b>Strikeouts:</b> 23, vs. Mississippi (3/4/05)	<b>Strikeouts (7-inn):</b> 17, vs. Northwestern (2/24/08)
--	---	---

**CAREER STATISTICS**

YEAR	ERA	W-L	APP	GS	CG	SHO/CBO	SV	IP	H	R	ER	BB	SO
2005	1.10	29-14	50	42	42	13/1	2	325.0	187	70	51	46	485
2006	1.06	35-7	44	37	37	16/2	1	282.2	153	55	43	80	408
2007	2.82	17-11	33	28	20	7/0	0	171.0	139	96	69	66	213
2008	0.78	22-3	29	25	20	6/3	2	170.2	88	32	19	24	249
<b>TOTALS</b>	<b>1.34</b>	<b>103-35</b>	<b>156</b>	<b>132</b>	<b>119</b>	<b>42/6</b>	<b>5</b>	<b>949.1</b>	<b>567</b>	<b>253</b>	<b>182</b>	<b>216</b>	<b>1355</b>

**#5 Donna Kerr • Pitcher • 5-7 • Bats: Right • Throws: Right • Freshman • San Diego, CA • Patrick Henry HS****Awards: 2008 (Freshman)** - Pacific-10 Conference Pitcher of the Week (March 4)**SEASON AND CAREER HIGHS**

<b>Innings Pitched:</b> 8.0, vs. UC Santa Barbara (2/9)	<b>Strikeouts:</b> 15, vs. Northwestern (3/9)
---	---

**CAREER STATISTICS**

YEAR	ERA	W-L	APP	GS	CG	SHO/CBO	SV	IP	H	R	ER	BB	SO
2008	0.86	14-2	19	18	8	5/5	0	105.2	53	24	13	26	132

**#7 Samantha Camuso • Outfielder • 5-7 • Bats: Left • Throws: Right • Freshman • Redding, CA • Foothill HS****Awards: 2008 (Freshman)** - Top 25 Finalist for USA Softball Player of the Year Award, Pacific-10 Conference Player of the Week (April 8)**SEASON AND CAREER HIGHS**

<b>At-Bats:</b> 4, 11 Times (last at Stanford, 4/27)	<b>Doubles:</b> 2, at San Diego (2/29)	<b>Total Bases:</b> 7, vs. Santa Clara (2/9)
<b>Runs Scored:</b> 5, vs. Santa Clara (2/9)	<b>Home Runs:</b> 1, vs. Oklahoma (2/8) & vs. S.Clara (2/9)	<b>Walks:</b> 2, vs. Northwestern (3/9)
<b>Hits:</b> 4, vs. Santa Clara (2/9)	<b>Runs Batted In:</b> 7, vs. Santa Clara (2/9)	<b>Stolen Bases:</b> 1, at San Diego (2/29)

**CAREER STATISTICS**

YEAR	AVG	GP-GS	AB	R	H	2B	3B	HR	RBI	TB	SLG%	BB	HBP	SO	GDP	OB%	SF	SH	SB-ATT
2008	.382	49-49	144	21	55	15	2	2	32	80	.556	13	2	28	2	.438	1	2	1-1

**#9 Kaila Shull • Catcher/Outfielder • 5-8 • Bats: Left • Throws: Right • Sophomore • Lodi, CA • Jim Elliot Christian HS****Awards: 2007 (Freshman)** - Honorable Mention All-Pac-10.**SEASON HIGHS**

<b>At-Bats:</b> 4, 4 Times (last at UC Santa Barbara, 3/25)	<b>Doubles:</b> 1, vs. Rutgers (3/8) & vs. Northridge (3/13)	<b>Total Bases:</b> 5, at San Diego (2/29)
<b>Runs Scored:</b> 2, at San Diego (2/29)	<b>Home Runs:</b> 1, vs. UCSB (2/9) & at San Diego (2/29)	<b>Walks:</b> 1, vs. Nevada (2/8)
<b>Hits:</b> 2, at San Diego (2/29) and at UCSB (3/25)	<b>RBI:</b> 2, 3 Times (last vs. Washington, 4/2)	<b>Stolen Bases:</b> 1, vs. Georgia (2/22) & vs. E. Mich. (3/1)

**CAREER HIGHS**

<b>At-Bats:</b> 5, at Cal State Fullerton (3/7/07)	<b>Doubles:</b> 2, vs. Northwestern (2/25/07)	<b>Total Bases:</b> 8, vs. Wright State (2/18/07)
<b>Runs Scored:</b> 2, 9 Times (last at San Diego, 2/29/08)	<b>Home Runs:</b> 2, vs. Wright State (2/18/07)	<b>Walks:</b> 2, vs. Loyola Marymount (2/27/07)
<b>Hits:</b> 3, vs. Northwestern (2/25/07) & at Oregon (4/14/07)	<b>Runs Batted In:</b> 4, vs. Wright State (2/18/07)	<b>Stolen Bases:</b> 1, 6 Times (last vs. E. Michigan, 3/1/08)

**CAREER STATISTICS**

YEAR	AVG	GP-GS	AB	R	H	2B	3B	HR	RBI	TB	SLG%	BB	HBP	SO	GDP	OB%	SF	SH	SB-ATT
2007	.274	53-52	146	31	40	8	2	7	26	73	.500	19	7	31	0	.382	1	7	4-4
2008	.204	21-17	54	6	11	2	0	2	7	19	.352	1	2	16	0	.246	0	2	2-2
<b>TOTALS</b>	<b>.255</b>	<b>74-69</b>	<b>200</b>	<b>37</b>	<b>51</b>	<b>10</b>	<b>2</b>	<b>9</b>	<b>33</b>	<b>92</b>	<b>.460</b>	<b>20</b>	<b>9</b>	<b>47</b>	<b>0</b>	<b>.348</b>	<b>1</b>	<b>9</b>	<b>6-6</b>



**#10 Lauren Mirabal • Utility • 5-6 • Bats: Left • Throws: Right • Freshman • San Dimas, CA • Bishop Amat HS****SEASON AND CAREER HIGHS**

<b>At-Bats:</b> 1, vs. Saint Peter's (3/2)	<b>Doubles:</b>	<b>Total Bases:</b>
<b>Runs:</b> 1, 14 Times (last vs. Arizona, 5/2)	<b>Home Runs:</b>	<b>Walks:</b>
<b>Hits:</b>	<b>Runs Batted In:</b>	<b>Stolen Bases:</b> 2, vs. Nevada (2/8)

**CAREER STATISTICS**

YEAR	AVG	GP-GS	AB	R	H	2B	3B	HR	RBI	TB	SLG%	BB	HBP	SO	GDP	OB%	SF	SH	SB-ATT
2008	.000	30-0	1	14	0	0	0	0	0	0	.000	0	0	0	0	.000	0	0	8-8

**#11 Ashley Herrera • Infielder • 5-6 • Bats: Left • Throws: Right • Senior • Canyon Country, CA • Valencia HS****SEASON HIGHS**

<b>At-Bats:</b> 5, vs. South Carolina (2/15)	<b>Doubles:</b>	<b>Total Bases:</b> 4, vs. South Carolina (2/15)
<b>Runs:</b> 2, 4 Times (last vs. South Carolina, 2/15)	<b>Home Runs:</b>	<b>Walks:</b>
<b>Hits:</b> 4, vs. South Carolina (2/15)	<b>Runs Batted In:</b>	<b>Stolen Bases:</b> 1, 4 Times (last vs. South Carolina, 2/15)

**CAREER HIGHS**

<b>At-Bats:</b> 5, vs. Miss. (3/4/05) & vs. S.Carolina (2/15/08)	<b>Doubles:</b> 1, 10 Times (last vs. Long Beach State, 3/12/06)	<b>Total Bases:</b> 6, vs. DePaul (2/13/04)
<b>Runs Scored:</b> 3, vs. Sacramento State (2/9/06)	<b>Home Runs:</b> 1, 11 Times (last vs. San Diego State, 5/21/06)	<b>Walks:</b> 3, vs. Sacramento State (2/9/06)
<b>Hits:</b> 4, vs. South Carolina (2/15/08)	<b>Runs Batted In:</b> 4, vs. San Diego State, 5/21/06)	<b>Stolen Bases:</b> 2, 3 Times (last at Oregon, 5/5/06)

**CAREER STATISTICS**

YEAR	AVG	GP-GS	AB	R	H	2B	3B	HR	RBI	TB	SLG%	BB	HBP	SO	GDP	OB%	SF	SH	SB-ATT
2004	.196	48-25	51	17	10	1	0	4	11	23	.451	8	1	15	0	.317	0	1	6-9
2005	.257	60-56	140	18	36	6	0	3	7	51	.364	11	0	29	0	.311	0	8	6-9
2006	.183	59-59	153	24	28	3	0	4	15	43	.281	15	0	40	0	.256	0	4	16-18
2007	.500	1-1	2	0	1	0	0	0	0	1	.500	0	0	1	0	.500	0	0	0-0
2008	.514	11-11	35	10	18	0	0	0	0	18	.514	0	1	5	0	.528	0	4	4-5
<b>TOTALS</b>	<b>.244</b>	<b>179-152</b>	<b>381</b>	<b>69</b>	<b>93</b>	<b>10</b>	<b>0</b>	<b>11</b>	<b>33</b>	<b>136</b>	<b>.357</b>	<b>34</b>	<b>2</b>	<b>90</b>	<b>0</b>	<b>.309</b>	<b>0</b>	<b>17</b>	<b>32-41</b>

**#13 Krista Colburn • Outfielder • 5-10 • Bats: Right • Throws: Right • Senior • Mukilteo, WA • Kamiak HS**

**Awards:** 2007 (Junior) - NFCA Second-Team All-American, Easton First-Team All-American, NFCA First-Team All-Pacific Region, First Team All-Pac-10, 2nd Team All-Pac-10 Academic.

2006 (Sophomore) - Second Team All-Pac-10, Pac-10 Player of the Week (Mar. 21). 2005 (Freshman) - College World Series All-Tournament Team.

**SEASON HIGHS**

<b>At-Bats:</b> 4, 10 Times (last at Stanford, 4/26)	<b>Doubles:</b> 1, 8 Times (last vs. California, 4/6)	<b>Total Bases:</b> 4, at Stanford (4/27)
<b>Runs:</b> 3, vs. Santa Clara (2/9) & vs. Oregon (3/30)	<b>Home Runs:</b> 1, at Stanford (4/27)	<b>Walks:</b> 3, vs. Portland St. (2/16) & vs. Washington (4/2)
<b>Hits:</b> 3, vs. J.Madison (2/29) & at Washington (4/18)	<b>Runs Batted In:</b> 3, vs. Santa Clara (2/9)	<b>Stolen Bases:</b> 1, 4 Times (last vs. Oregon, 3/30)

**CAREER HIGHS**

<b>At-Bats:</b> 6, vs. Mississippi (3/4/05)	<b>Doubles:</b> 1, 30 Times (last vs. California, 4/6/08)	<b>Total Bases:</b> 7, vs. Cal (4/2/06) & vs. Wright State (2/18/07)
<b>Runs Scored:</b> 3, 6 Times (last vs. Oregon, 3/30/08)	<b>Home Runs:</b> 1, 18 Times (last at Stanford, 4/27/08)	<b>Walks:</b> 3, 4 Times (last vs. Washington, 4/2/08)
<b>Hits:</b> 4, at UCSB (1/30/05) & at Stanford (4/20/07)	<b>RBI:</b> 3, 9 Times (last vs. Santa Clara, 2/9/08)	<b>Stolen Bases:</b> 2, vs. Nevada (2/11/07)

**CAREER STATISTICS**

YEAR	AVG	GP-GS	AB	R	H	2B	3B	HR	RBI	TB	SLG%	BB	HBP	SO	GDP	OB%	SF	SH	SB-ATT
2005	.294	60-60	163	16	48	6	2	3	20	67	.411	19	0	33	1	.366	1	5	4-4
2006	.283	59-59	191	26	54	7	4	7	39	90	.471	10	3	31	0	.327	1	17	3-4
2007	.382	55-55	173	50	66	9	2	7	32	100	.578	35	0	21	0	.483	1	5	11-15
2008	.341	48-48	138	35	47	8	0	1	22	58	.420	30	1	16	2	.453	3	4	4-6
<b>TOTALS</b>	<b>.323</b>	<b>222-222</b>	<b>665</b>	<b>127</b>	<b>215</b>	<b>30</b>	<b>8</b>	<b>18</b>	<b>113</b>	<b>315</b>	<b>.474</b>	<b>94</b>	<b>4</b>	<b>101</b>	<b>3</b>	<b>.407</b>	<b>6</b>	<b>31</b>	<b>22-29</b>

**#14 Julie Burney • Infielder • 5-5 • Bats: Right • Throws: Right • Sophomore • Placentia, CA • El Dorado HS****SEASON HIGHS**

<b>At-Bats:</b> 3, 24 Times (last at Stanford, 4/27)	<b>Doubles:</b> 1, 3 Times (last vs. Rutgers, 3/8)	<b>Total Bases:</b> 4, vs. Northwestern (2/24)
<b>Runs:</b> 2, vs. Washington (4/2)	<b>Home Runs:</b> 1, vs. Northwestern (2/24)	<b>Walks:</b> 2, 5 Times (last at California, 4/25)
<b>Hits:</b> 2, 3 Times (last vs. Oregon, 3/30)	<b>Runs Batted In:</b> 3, vs. Oregon (3/30)	<b>Stolen Bases:</b>

**CAREER HIGHS**

<b>At-Bats:</b> 4, 5 Times (last at Cal Poly, 3/25/07)	<b>Doubles:</b> 1, 8 Times (last vs. Rutgers, 3/8/08)	<b>Total Bases:</b> 6, at California (4/22/07)
<b>Runs Scored:</b> 2, 5 Times (last vs. Washington, 4/2/08)	<b>Homers:</b> 1, 8 Times (last vs. Northwestern, 2/24/08)	<b>Walks:</b> 2, 9 Times (last at California, 4/25/08)
<b>Hits:</b> 3, vs. Long Beach State (3/10/07)	<b>Runs Batted In:</b> 4, vs. Long Beach State (3/10/07)	<b>Stolen Bases:</b> 1, vs. Oklahoma State (2/17/07)

**CAREER STATISTICS**

YEAR	AVG	GP-GS	AB	R	H	2B	3B	HR	RBI	TB	SLG%	BB	HBP	SO	GDP	OB%	SF	SH	SB-ATT
2007	.224	55-54	143	21	32	5	0	7	19	58	.406	16	2	44	1	.309	1	3	1-1
2008	.181	43-41	105	9	19	3	0	1	10	25	.238	16	2	26	0	.301	0	0	0-0
<b>TOTALS</b>	<b>.206</b>	<b>98-95</b>	<b>248</b>	<b>30</b>	<b>51</b>	<b>8</b>	<b>0</b>	<b>8</b>	<b>29</b>	<b>83</b>	<b>.335</b>	<b>32</b>	<b>4</b>	<b>70</b>	<b>1</b>	<b>.305</b>	<b>1</b>	<b>3</b>	<b>1-1</b>

**#18 Monica Harrison • Infielder • 5-4 • Bats: Right • Throws: Right • Freshman • Garden Grove, CA • Pacifica HS****SEASON AND CAREER HIGHS**

<b>At-Bats:</b> 4, 7 Times (last vs. Arizona State, 5/4)	<b>Doubles:</b> 1, 6 Times (last at Washington, 4/19)	<b>Total Bases:</b> 4, vs. Arizona (5/2)
<b>Runs Scored:</b> 2, vs. Oregon (3/30)	<b>Home Runs:</b> 1, vs. Arizona (5/2)	<b>Walks:</b> 2, at Arizona (4/13)
<b>Hits:</b> 3, vs. South Carolina (2/15) & vs. CSUN (3/13)	<b>Runs Batted In:</b> 3, vs. Oregon (3/30)	<b>Stolen Bases:</b> 1, 3 Times (last vs. California, 4/6)

**CAREER STATISTICS**

YEAR	AVG	GP-GS	AB	R	H	2B	3B	HR	RBI	TB	SLG%	BB	HBP	SO	GDP	OB%	SF	SH	SB-ATT
2008	.256	44-44	121	17	31	6	0	1	15	40	.331	8	3	14	1	.316	1	0	3-4

**#20 Whitney Baker • Pitcher • 5-10 • Bats: Right • Throws: Right • Sophomore • Vancouver, WA • Skyview HS****SEASON HIGHS**

<b>Innings Pitched:</b> 2.0, vs. Santa Clara (2/9)	<b>Strikeouts:</b> 3, vs. Santa Clara (2/9)
--	---

**CAREER HIGHS**

<b>Innings Pitched:</b> 7, vs. Canisius (3/10/07) & vs. Southern Utah (3/13/07)	<b>Strikeouts:</b> 11, vs. Southern Utah (3/13/07)
---	--

**CAREER STATISTICS**

YEAR	ERA	W-L	APP	GS	CG	SHO/CBO	SV	IP	H	R	ER	BB	SO
2007	2.65	4-3	11	6	3	2/0	0	37.0	34	21	14	16	45
2008	2.33	0-0	2	0	0	0/0	0	3.0	2	1	1	1	5
<b>TOTALS</b>	<b>2.62</b>	<b>4-3</b>	<b>13</b>	<b>6</b>	<b>3</b>	<b>2/0</b>	<b>0</b>	<b>40.0</b>	<b>36</b>	<b>22</b>	<b>15</b>	<b>17</b>	<b>50</b>

**#21 Grace Murray • Outfielder • 5-4 • Bats: Right • Throws: Right • Freshman • Lakewood, CA • Gahr HS****SEASON AND CAREER HIGHS**

<b>At-Bats:</b>	<b>Doubles:</b>	<b>Total Bases:</b>
<b>Runs Scored:</b> 1, 3 Times (last at UCSB, 3/25)	<b>Home Runs:</b>	<b>Walks:</b>
<b>Hits:</b>	<b>Runs Batted In:</b>	<b>Stolen Bases:</b>

**CAREER STATISTICS**

YEAR	AVG	GP-GS	AB	R	H	2B	3B	HR	RBI	TB	SLG%	BB	HBP	SO	GDP	OB%	SF	SH	SB-ATT
2008	.000	5-0	0	3	0	0	0	0	0	0	.000	0	0	0	0	.000	0	0	0-0

**#23 Amy Crawford • Outfielder • 5-9 • Bats: Right • Throws: Right • Freshman • Pleasanton, CA • Foothill HS****SEASON AND CAREER HIGHS**

<b>At-Bats:</b> 1, vs. Saint Peter's (3/2)	<b>Doubles:</b>	<b>Total Bases:</b>
<b>Runs:</b> 1, 10 Times (last at Stanford, 4/27)	<b>Home Runs:</b>	<b>Walks:</b>
<b>Hits:</b>	<b>Runs Batted In:</b>	<b>Stolen Bases:</b>

**CAREER STATISTICS**

YEAR	AVG	GP-GS	AB	R	H	2B	3B	HR	RBI	TB	SLG%	BB	HBP	SO	GDP	OB%	SF	SH	SB-ATT
2008	.000	23-1	1	10	0	0	0	0	0	0	.000	0	0	0	0	.000	0	0	0-0

**#27 Jennifer Schroeder • Catcher • 6-0 • Bats: Right • Throws: Right • Junior • Yorba Linda, CA • Esperanza HS****SEASON HIGHS**

<b>At-Bats:</b> 4, 5 Times (last at California, 4/25)	<b>Doubles:</b> 1, 5 Times (last at Washington, 4/18)	<b>Total Bases:</b> 4, vs. Hawai'i (2/23) & at Arizona (4/13)
<b>Runs Scored:</b> 2, vs. Santa Clara (2/9)	<b>Home Runs:</b> 1, vs. Hawai'i (2/23) & at Arizona (4/13)	<b>Walks:</b> 1, at UCSB (3/25) & vs. Oregon State (3/28)
<b>Hits:</b> 2, vs. Santa Clara (2/9)	<b>RBI:</b> 2, vs. Santa Clara (2/9) & vs. California (4/6)	<b>Stolen Bases:</b>

**CAREER HIGHS**

<b>At-Bats:</b> 4, 6 Times (last at California, 4/25/08)	<b>Doubles:</b> 1, 4 Times (last at Washington, 4/18/08)	<b>Total Bases:</b> 4, vs. Hawai'i (2/23/08) & at Ariz. (4/13/08)
<b>Runs Scored:</b> 2, vs. Santa Clara (2/9/08)	<b>Homers:</b> 1, vs. Hawai'i (2/23/08) & at Ariz. (4/13/08)	<b>Walks:</b> 1, at UCSB (3/25/08) & vs. Oregon St. (3/28/08)
<b>Hits:</b> 2, vs. Santa Clara (2/9/08)	<b>RBI:</b> 2, vs. Santa Clara (2/9/08) & vs. Cal (4/6/08)	<b>Stolen Bases:</b>

**CAREER STATISTICS**

YEAR	AVG	GP-GS	AB	R	H	2B	3B	HR	RBI	TB	SLG%	BB	HBP	SO	GDP	OB%	SF	SH	SB-ATT
2005	.077	13-8	26	1	2	0	0	0	0	2	.077	0	0	10	0	.077	0	0	0-0
2006	.000	5-2	2	0	0	0	0	0	0	0	.000	0	0	1	0	.000	0	0	0-0
2008	.200	43-41	110	5	22	5	0	2	11	33	.300	2	4	40	0	.239	1	6	0-0
<b>TOTALS</b>	<b>.174</b>	<b>61-51</b>	<b>138</b>	<b>6</b>	<b>24</b>	<b>5</b>	<b>0</b>	<b>2</b>	<b>11</b>	<b>35</b>	<b>.254</b>	<b>2</b>	<b>4</b>	<b>51</b>	<b>0</b>	<b>.207</b>	<b>1</b>	<b>6</b>	<b>0-0</b>

**#29 Katie Schroeder • Outfielder • 5-10 • Bats: Left • Throws: Right • Freshman • Yorba Linda, CA • Esperanza HS****SEASON AND CAREER HIGHS**

<b>At-Bats:</b> 5, 4 Times (last at UC Santa Barbara, 3/25)	<b>Doubles:</b> 1, 5 Times (last vs. Arizona State, 5/4)	<b>Total Bases:</b> 5, vs. Santa Clara (2/9) & vs. Rutgers (3/8)
<b>Runs Scored:</b> 3, vs. Santa Clara (2/9)	<b>Home Runs:</b>	<b>Walks:</b> 1, 17 Times (last at Stanford, 4/27)
<b>Hits:</b> 4, vs. Santa Clara (2/9) & vs. Rutgers (3/8)	<b>Runs Batted In:</b> 4, vs. Santa Clara (2/9)	<b>Stolen Bases:</b> 2, vs. CS Full. (3/12) & vs. Oregon (3/30)

**CAREER STATISTICS**

YEAR	AVG	GP-GS	AB	R	H	2B	3B	HR	RBI	TB	SLG%	BB	HBP	SO	GDP	OB%	SF	SH	SB-ATT
2008	.364	47-47	154	26	56	5	0	0	12	61	.396	17	2	28	1	.431	1	5	7-13

**#31 Megan Langenfeld • Pitcher/First Base • 5-6 • Bats: Left • Throws: Right • Sophomore • Bakersfield, CA • Centennial HS****Awards: 2008 (Sophomore)** - Pac-10 Conference Pitcher of the Week (April 29)**2007 (Freshman)** - NFCA Second-Team All-Pacific Region, Second-Team All-Pac-10, USA Softball Player of the Week & Pac-10 Pitcher of the Week (May 15).**SEASON HITTING HIGHS**

<b>At-Bats:</b> 4, 7 Times (last at Stanford, 4/27)	<b>Doubles:</b> 1, 6 Times (last at Arizona, 4/13)	<b>Total Bases:</b> 5, vs. S.Clara (2/9) & vs. S.Carolina (2/15)
<b>Runs Scored:</b> 4, vs. Santa Clara (2/9)	<b>Home Runs:</b> 1, 5 Times (last at Stanford, 4/27)	<b>Walks:</b> 3, vs. Santa Clara (2/9) & vs. Oregon (3/30)
<b>Hits:</b> 3, 3 Times (last at California, 4/25)	<b>RBI:</b> 3, 4 Times (last at Stanford, 4/27)	<b>Stolen Bases:</b>

**CAREER HITTING HIGHS**

<b>At-Bats:</b> 4, 13 Times (last at Stanford, 4/27/08)	<b>Doubles:</b> 2, vs. Colorado St. (2/16/07) & vs. UNLV (2/17/07)	<b>Total Bases:</b> 8, vs. Wright State (2/18/07)
<b>Runs Scored:</b> 4, vs. Santa Clara (2/9/08)	<b>Home Runs:</b> 2, vs. Wright State (2/18/07)	<b>Walks:</b> 3, vs. S. Clara (2/9/08) & vs. Oregon (3/30/08)
<b>Hits:</b> 3, 4 Times (last at California, 4/25/08)	<b>RBI:</b> 3, 6 Times (last at Stanford, 4/27/08)	<b>Stolen Bases:</b> 1, vs. Oklahoma State (2/17/07)

**CAREER HITTING STATISTICS**

YEAR	AVG	GP-GS	AB	R	H	2B	3B	HR	RBI	TB	SLG%	BB	HBP	SO	GDP	OB%	SF	SH	SB-ATT
2007	.315	55-55	149	21	47	12	1	7	41	82	.550	24	8	26	3	.436	0	4	1-1
2008	.339	45-45	124	18	42	6	0	5	33	63	.508	27	4	15	1	.468	1	1	0-0
<b>TOTALS</b>	<b>.326</b>	<b>100-100</b>	<b>273</b>	<b>39</b>	<b>89</b>	<b>18</b>	<b>1</b>	<b>12</b>	<b>74</b>	<b>145</b>	<b>.531</b>	<b>51</b>	<b>12</b>	<b>41</b>	<b>4</b>	<b>.451</b>	<b>1</b>	<b>5</b>	<b>1-1</b>

**SEASON PITCHING HIGHS**

<b>Innings Pitched:</b> 7.0, at California (4/25)	<b>Strikeouts:</b> 7, vs. Rutgers (3/8)
---	---

**CAREER PITCHING HIGHS**

<b>Innings Pitched:</b> 8.0, vs. Hawai'i (5/19/07)	<b>Strikeouts:</b> 8, at Oregon (4/15/07)
--	---

**CAREER PITCHING STATISTICS**

YEAR	ERA	W-L	APP	GS	CG	SHO/CBO	SV	IP	H	R	ER	BB	SO
2007	1.45	14-3	26	19	14	7/0	1	130.2	115	35	27	20	93
2008	1.57	7-1	18	6	2	1/8	5	53.2	29	15	12	10	57
<b>TOTALS</b>	<b>1.48</b>	<b>21-4</b>	<b>44</b>	<b>25</b>	<b>16</b>	<b>8/8</b>	<b>6</b>	<b>184.1</b>	<b>144</b>	<b>50</b>	<b>39</b>	<b>30</b>	<b>150</b>

**#44 Danielle Peterson • Utility • 5-7 • Bats: Right • Throws: Right • Senior • San Jose, CA • Archbishop Mitty HS****SEASON HIGHS**

<b>At-Bats:</b>	<b>Doubles:</b>	<b>Total Bases:</b>
<b>Runs Scored:</b>	<b>Home Runs:</b>	<b>Walks:</b>
<b>Hits:</b>	<b>Runs Batted In:</b>	<b>Stolen Bases:</b>

**CAREER HIGHS**

<b>At-Bats:</b> 4, at Oregon (4/14/07)	<b>Doubles:</b> 1, vs. Georgia (5/28/05)	<b>Total Bases:</b> 2, vs. Georgia (5/28/05)
<b>Runs:</b> 1, vs. Sacramento St. (2/9/06) & vs. UNLV (2/17/07)	<b>Home Runs:</b>	<b>Walks:</b> 1, Eight Times (last vs. Southern Utah, 3/13/07)
<b>Hits:</b> 1, 5 Times (last vs. Tennessee, 6/4/06)	<b>Runs Batted In:</b> 1, 4 Times (last vs. LMU, 2/27/07)	<b>Stolen Bases:</b>

**CAREER STATISTICS**

YEAR	AVG	GP-GS	AB	R	H	2B	3B	HR	RBI	TB	SLG%	BB	HBP	SO	GDP	OB%	SF	SH	SB-ATT
2005	.167	14-0	12	0	2	1	0	0	1	3	.250	0	0	3	0	.167	0	0	0-0
2006	.200	15-0	15	1	3	0	0	0	1	3	.200	2	0	7	0	.294	0	0	0-0
2007	.000	17-5	21	1	0	0	0	0	2	0	.000	6	0	5	0	.214	1	0	0-0
2008	.000	0-0	0	0	0	0	0	0	0	0	.000	0	0	0	0	.000	0	0	0-0
<b>TOTALS</b>	<b>.104</b>	<b>46-5</b>	<b>48</b>	<b>2</b>	<b>5</b>	<b>1</b>	<b>0</b>	<b>0</b>	<b>4</b>	<b>6</b>	<b>.125</b>	<b>8</b>	<b>0</b>	<b>15</b>	<b>0</b>	<b>.228</b>	<b>1</b>	<b>0</b>	<b>0-0</b>

**#47 Amanda Kamekona • Infielder • 5-2 • Bats: Right • Throws: Right • Junior • Chino Hills, CA • Ayala HS • Cal State Fullerton****Awards: 2008 (Junior)** - NFCA and USA Softball National Player of the Week (May 6), Pac-10 Conference Player of the Week (May 6)**SEASON HIGHS**

<b>At-Bats:</b> 5, vs. Rutgers (3/8) & at UCSB (3/25)	<b>Doubles:</b> 2, vs. Santa Clara (2/9)	<b>Total Bases:</b> 8, 3 Times (last vs. Arizona State, 5/3)
<b>Runs:</b> 3, vs. Santa Clara (2/9) & vs. Portland St. (2/16)	<b>Homers:</b> 2, vs. CS Northridge (3/13) & vs. ASU (5/3)	<b>Walks:</b> 2, 4 Times (last vs. California, 4/5)
<b>Hits:</b> 3, 4 Times (last vs. Arizona State, 5/4)	<b>Runs Batted In:</b> 8, vs. Santa Clara (2/9)	<b>Stolen Bases:</b> 3, vs. Portland State (2/16)

**CAREER HIGHS (ITALICS AT CAL STATE FULLERTON)**

<b>At-Bats:</b> 5, 3 Times (last at UC Santa Barbara, 3/25/08)	<b>Doubles:</b> 2, vs. Santa Clara (2/9/08)	<b>Total Bases:</b> 8, 3 Times (last vs. Arizona State, 5/3/08)
<b>Runs:</b> 3, 3 Times (last vs. Portland State, 2/16/08)	<b>Homers:</b> 2, vs. CSUN (3/13/08) & vs. ASU (5/3/08)	<b>Walks:</b> 2, 4 Times (last vs. California, 4/5/08)
<b>Hits:</b> 4, vs. Illinois State (3/5/05)	<b>Runs Batted In:</b> 8, vs. Santa Clara (2/9/08)	<b>Stolen Bases:</b> 3, vs. Portland State (2/16/08)

**CAREER STATISTICS (2006-07 AT CAL STATE FULLERTON)**

YEAR	AVG	GP-GS	AB	R	H	2B	3B	HR	RBI	TB	SLG%	BB	HBP	SO	GDP	OB%	SF	SH	SB-ATT
2005	.284	50-49	162	18	46	4	2	2	11	60	.370	4	0	20	0	.299	1	11	7-9
2006	.326	46-42	144	23	47	8	4	4	26	75	.521	7	0	18	0	.353	2	3	6-9
2008	.327	49-49	156	39	51	14	2	11	36	102	.654	15	0	15	0	.384	1	10	8-10
<b>TOTALS</b>	<b>.312</b>	<b>145-140</b>	<b>462</b>	<b>80</b>	<b>144</b>	<b>26</b>	<b>8</b>	<b>17</b>	<b>73</b>	<b>237</b>	<b>.513</b>	<b>26</b>	<b>0</b>	<b>53</b>	<b>0</b>	<b>.346</b>	<b>4</b>	<b>24</b>	<b>21-28</b>